



2017- 2022

IPLAN







Public Health
Prevent. Promote. Protect.

Table of Contents

Executive Summary	6
Purpose Statement.....	8
Update on Previous IPLAN	9
Community Input (Primary/Qualitative Data)	13
Local Health Information (Secondary/Quantitative Data).....	18
Issues Identification	40
Action Plan.....	42
Local Health Information.....	49

HEALTH:

*A state of complete
physical, mental and social wellbeing,
and not merely the absence
of disease or infirmity.*

–World Health Organization



Public Health
Prevent. Promote. Protect.

Executive Summary

The Illinois Project for Local Assessment of Needs (IPLAN) was developed in 1992 by the Illinois Department of Public Health (IDPH in collaboration with local health departments and other public health system partners). (IPLAN Workbook, Illinois Public Health Institute, 2007) IPLAN requires local health departments to conduct community and agency assessments and develop public health strategies every five years. IPLAN is the word/acronym used for both the process and the final document produced at the local level.

A community health needs assessment is one of the core IPLAN requirements. Local health departments are encouraged to use a variety of tools available for this assessment. The Certified Local Health Department Code standards for the Community Health Needs Assessment requires that:

- 1) The process shall involve community participation in the identification of community health problems, priority-setting, and completion of the community health needs assessment and community health plan.
- 2) Community health indicators contained in the IPLAN Data System or a similar, equally comprehensive data system developed by the local health department shall be utilized to structure the minimal content of the assessment.
- 3) The process shall result in the setting of priority health needs.
- 4) The process shall include an analysis of priority problems that shall lead to the establishment of objectives and strategies for intervention.

Bureau County Health Department, Putnam County Health Department and Marshall County Health Department are separate, certified health departments with separate Boards of Health that encompass an area with very similar health issues, resources and barriers. In addition, they share staff that administer the health departments' services, and thereby have similar organizational needs. This IPLAN includes a thorough Community Health Needs Assessment for all three counties, and a health plan that addresses the identified health priorities, risk factors, contributing factors and provides proven intervention strategies to address those issues. The process follows the national planning model developed for hospitals and other health care providers to meet the requirements of the Patient Protection and Affordable Care Act. The plan addresses the issues identified as being of greatest interest in our communities:

- 1. Improved Access to Services**
 - a. Mental Health**
 - b. Medical Specialists**
 - c. Dental Care**
 - d. Information About Available Local Health Services**
 - e. Marshall County - Transportation**
- 2. Improved Health Through Relationships - Focusing on Youth and Seniors**
 - a. Education**
 - b. Outreach**
 - c. Partnerships**
 - d. Reducing Isolation**
- 3. Improved Access to Healthy Foods and Nutrition Information**
- 4. Address Substance Use, Substance Misuse and Substance Use Disorders**

The four primary issues and nine sub-issues identified in the IPLAN this year represent the broadest array of challenges faced in an individual IPLAN by any of these three counties in previous years. The selections also recognize some concerns distinct to fewer than all three counties but still significant in specific locations. In some cases, the identified issues highlight concerns that go outside of common public health matters but, nonetheless, have significant impact on health.

The steps chosen to address the identified needs over the next five years are creative, ambitious and reliant on strong collaboration among public health, our health care partners and the community overall. In some cases, the proposed solutions utilize traditional and non-traditional approaches to address complex puzzles.

This is our IPLAN. We invite you to join us – whether by joining our efforts or just supporting our work from the sidelines - as we embark on this path to solutions that will improve the health of the citizens of Bureau, Putnam and Marshall Counties. We believe there are exciting and positive things ahead.

Respectfully Submitted,

Diana Rawlings, Public Health Administrator

Purpose Statement

The Illinois Project for Local Assessment of Needs (IPLAN) is a process that every certified health department in Illinois uses to assess the health of the community and plan programs that address health needs that are specific to the local community. Simply stated, it is a way of determining as a community what the health needs are in our counties and how we can best utilize our resources to improve the health of our citizens.

The IPLAN process involves members of the community representing a wide array of sectors, some of whom possess expertise in specific health related fields and some with access to key assets and resources. The process identifies and prioritizes health problems in Bureau, Putnam and Marshall Counties, through discussion and data review. Over the course of the next five years the health departments and community partners will work to improve the health of our community in the identified areas. Because health needs are identified by community members, the IPLAN represents a health assessment of our community, by our community.

Update on previous Bureau & Putnam County IPLAN

The 2012-2017 Bureau & Putnam County Health Department IPLAN selected Obesity, Youth Substance Abuse, Mental Health and Access to Care as the health issues in our community that we would work to address over a 5-year timeline. Here are some things that we accomplished in these areas:

Health Problem: Obesity

Obesity is a complicated health problem that unchecked can lead to chronic disease such as diabetes and heart disease. Addressing this issue in our community required an array of strategies, from education on healthy lifestyles, to helping local businesses and schools begin wellness programs for their staff and promoting healthy locally-grown foods at farmer's markets. Through social media, our website, talks in the community, and our magazine "Family Connections", our staff worked to educate the community on healthy eating.

We helped schools develop programs that made healthy choices easier for their staff during the workday and healthy foods accessible at sporting events. In 2014, the health department's worksite wellness program received a silver-level "Illinois Healthy Worksite" award. Later that year, we secured a grant from USDA that helped us promote farmer's markets in our community, bring local growers together for the first time, develop a loyalty program for those shopping at farmer's markets and organize "Farm Crawls" that highlighted local growers. We worked with Cornerstone in Sheffield to start a new farmer's market in an area designated by the US Census as a "food desert", helped local producers add EBT readers so low-income families could utilize LINK cards and hosted two farm-to-table dinners celebrating local foods and local chefs.

Health Problem: Youth Substance Abuse

Youth Substance Abuse was first chosen in the 2007-2012 IPLAN as a health problem we would address. During that 5-year timeframe we started the Community Partners against Substance Abuse Coalition (CPASA) and received a Drug-Free Community (DFC) grant to fund their work. Over the last IPLAN we were able to help CPASA get another 5 years of DFC funding as well as additional grants.

In the past few years CPASA has collected over 2,000 lbs of unused prescription drugs and helped to get Social Host, Keg Registration and Synthetic Drug Ordinances passed. Their program “Hidden in Plain Site” has been offered throughout our 2-county area and beyond, and their team of Beverage, Alcohol Servers and Sellers Education Trainers (BASSET) offers trainings regularly. The health department and CPASA staff and volunteers presented on coalition building at 2 state-wide conferences in 2016.

In order to implement peer-mediated social change (per the Social Ecology Model of adolescent substance abuse) we started a youth coalition called BP Power. This group has 25 plus junior high and high school students from 5 different school districts. BP Power youth work to advocate for positive change at their schools and communities, such as tobacco-free parks and e-cigarette policies in their schools, and host substance-free youth events. Every year we help to send these youth to the Cebrin Goodman Teen Institute to learn about leadership and becoming advocates for change in their communities.

In 2016, we partnered with local law enforcement and started a program that helps addicts seeking help get into treatment within 24 hours. Through our Medical Reserve Corp we provided the drug that reverses opioid overdoses, Narcan, and training to every law enforcement officer in Bureau, Putnam and Marshall Counties. All of this has made a difference!

From 2008 to 2014 in there was a 10% increase in Sophomores reporting they had not used cigarettes in the past 30 days, and a 16% increase in Sophomores reporting they had not used alcohol and/or marijuana in the past 30 days! (IL Youth Survey)

In April our health department received an award from the Assistant Secretary for Preparedness and Response for CPASA’s partnership with our MRC to address substance abuse. We have also been notified that shortly after submission of this report the National Association of City and County Health Officials (NACCHO) intends to recognize our health department and designate CPASA as a “Model Practice”.

Health Problem: Mental Health

Mental Health was new to our IPLAN health issues in 2012. Progress in this area has been slow, but steady. We developed a mental health committee and held public meetings to discuss the needs in our community and begin collaboration. In 2015, Dr. Green, a psychiatrist interested in serving patients in this area attended a CPASA meeting where he was introduced to

the CEO of Gateway Services. This began a partnership that started mental health services being offered at Gateway, in the same building as the health department.

In 2016, our BP Power Coalition held an event “Reaching Common Ground in Mental Health” for over 100 youth. That same year our administrator was accepted into a National Council of Behavioral Health cohort of public health administrators working on mental health issues. In 2015, our health department began publishing “Family Connections” magazine, which promotes healthy living and addresses areas of mental health.

Health Problem: Access to Care

Living in a rural area often means low access to healthcare. Bureau and Putnam County are both designated underserved areas for primary care, mental health and dental care. Access to Care was added as an IPLAN health issue in 2012. Since that time we have worked to improve access to care in several ways. Our health department has had a public health dental clinic serving uninsured individuals and those utilizing Medicaid since 2000. Over the last 5 years we have worked to increase immunization rates by adding insurance billing and by offering later clinic hours to accommodate working parents. Our staff serve as the Performance Compliance Oversight Monitor (PCOM) for our rural transit system, BPART, which works to help our rural community get to medical providers.

Update on previous Marshall County IPLAN

The 2012-2017 Marshall County Health Department IPLAN selected Behavioral Health/Youth Substance Abuse, Obesity and Oral Health as the health issues to address over a 5-year timeline. The Bureau County Health Department began administrating public health services for Marshall County in December, 2015. While much of this work was done prior to our partnership, it is clear that progress has been made towards improving the health problems identified in Marshall County’s 2012-2017 IPLAN. Here are some things that that were accomplished in these areas:

Health Problem: Behavioral Health / Youth Substance Abuse

Behavioral Health/Youth Substance Abuse was first chosen as a health problem to address in Marshall County’s 2007-2012 IPLAN. In 2010, the Behavioral Health Task Force was

formed to help address this issue. Through academic partnerships and a community-wide collaborative established and led by the Marshall County Health Department and Board of Health, the objectives the task force set out to reach included:

- Providing grass-root level efforts to improve and integrate access to mental health related services within the county;
- Providing and supporting delivery of advocacy and educational activities and programs concerning mental wellness related issues, and;
- Disseminating information about the Marshall County Behavioral Health Task Force to provoke thinking and discussion about activities and potential unmet needs in the community.

Through their work, the Task Force has helped Marshall County residents gain access to mental health counseling, outreach activities, telepsychiatry, training for first responders and in-school prevention activities that previously did not exist. In addition, Mental Health First Aid Training and Wellness Recovery Action Plan (WRAP) training has been offered throughout the county, and the health department has promoted the Illinois Quitline through Tobacco-Free Communities grant funding.

Health Problem: Obesity

To begin addressing obesity and the chronic health problems associated with it, the Marshall County Health Department partnered with local schools of nursing. Nursing students partnered with the health department and schools to work with local restaurants and schools to increase knowledge about healthy eating choices.

Health Problem: Oral Health

Access to dental care is often difficult in rural areas, especially for low-income families. The Marshall County Health Department partnered with student nurses to promote yearly or biannual dental examinations, develop and promote dental health awareness resulting with an improved understanding of the relationship between periodontal disease and cardiovascular disease at local businesses and events. Student nurses also worked with local elementary schools educating children on proper brushing and flossing techniques.

COMMUNITY INPUT

(Primary/Qualitative Data)

Primary data was collected from three focus groups, one in each of the three counties. The groups were facilitated by the Public Health Planner who is experienced in the Community Health needs Assessment

FOCUS GROUP I – MARSHALL COUNTY

The first focus group was held as a facilitated listening session at the Marshall County Health Department office in Lacon on March, 16th. Participants included:

- Brad Lindstrom, County Board and health board
- Ron Schoof, Lacon mayor
- Dawn Conerton, Magnolia resident, health educator
- Mary Knapp, Lake Wildwood resident, RN, Prairie Home Care
- Emily Kelly, MSN, MCHD
- Diana Rawlings, MCHD (observing)
- Donna Augustyn-Sloan, MS OTR/L, health board
- Polly Kocher, Lactation Consultant, farm wife
- Aaron Wilson, Deputy, Marshall County Sheriff
- Amanda Yetter, Mayor of Varna
- Dr. Andrew Dorsey, Pharmacist, health board

The group identified the following health concerns in Marshall County:

- Depression and suicide among farmers and the county generally
 - Number of suicides
 - Access to services
- Mental Health
 - Access to services
 - Costs (people not seeking care because of cost/high premiums)
 - Uncertainty of electronic based services
 - Number of persons impacted
- There is no assigned managed care agency
- Substance abuse
 - Alcohol
 - Heroin (especially in Lacon and Henry areas)
 - Methamphetamine in small amounts but still an issue
 - Prescription drug abuse is a problem across all ages
 - Sale
 - Trading
 - Stolen
 - Tobacco
 - [absence of requirements for ILPMP checks]
 - [absence of Prescription drug collection boxes]

- Aging population
 - Senior care – no senior care home in Lacon
 - Memory care
 - Assisted liberty
 - Age related illnesses
 - Isolated elders – don't want to burden people and don't know what is available
- Teens and young adults having children with no healthcare
- Access to local care generally
 - Few local services – no access to specialists
 - Transportation is difficult
 - Distance
- Information about available local services and about transportation (MSW)
- Cardio-vascular health
- Cancer
- Obesity
- SIDS
- Additional or better coordinated domestic violence services and more information of services available (Freedom house, counselors for children coming to local church)
- Access to dental care for youth and adults that are underinsured, uninsured or covered by Medicaid
- Lack of coordination of local resources

FOCUS GROUP II – BUREAU COUNTY

The second focus group was held as a facilitated listening session at the Bureau County Health Department office in Princeton on March, 20th. Participants included:

- Lyn Olds, Marketing Director, Liberty Village of Princeton, Wyandot resident
- Dr. Krabill, Dentist, Tiskilwa
- Jeff Dean, Director, Gateway & BPART, Princeton
- Lisa Clinton, RN, St. Margaret's Hospital
- Deb Wood, RN, PMH, EMS coordinator, Manlius
- Dr. Gregg Davis, Physician, health board
- Deb Ladinsky, former educator, Spring Valley Farmer's market, Spring Valley Economic Development
- John Thompson, former Sheriff, Ladd
- Elizabeth Pratt, community organizer, Sheffield
- Amber Harper, former school superintendent, Walnut, Festival 56 board
- Denise Ihrig, Senior Center, BPART
- Janice Wamhoff, Bureau County Coroner
- Deb Madsen, health board, banker

The group identified the following health concerns in Bureau County:

- Education about parenting for young adults
- Isolation of the elderly/difficulty in accessing resources
- Aggression and violence in the emergency rooms and at the hospitals
 - Drugs
 - Alcohol
 - Tobacco
 - Mental health issues
 - Behavioral health issues at younger ages
- Bullying/peer relationships among youth – possibly leading to suicide
- Schools don't have resources to help all of these kids.
- Cancer
- Heart issues
- COPD
- Obesity
- Smoking
- Alcohol
- Planning for and sustaining resource for seniors
 - Information for seniors about available local resources
 - Advocacy for seniors
 - Nursing homes may be able to work directly with senior center
- Information about local health services generally especially in rural areas
- Lack of transition services among facilities and post-care including food, especially for seniors
- Health coaches for high risk patients to address high costs and reduce likelihood of readmissions, centering around diabetes, heart failure and COPD, could be nurses or lay coaches.
- Awareness about BPART
- Access to nutrition education and healthy foods for young parents to mid-age, locally sourced when possible, possibly partnering seniors with young moms, feeding sites for elderly in Spring Valley and Sheffield, feeding children when school is out
- Farmers market access and continuing the voucher program other opportunities such as rural deliveries of healthy foods, getting more vendors to accept Link card, senior voucher program in Spring Valley
- Sustaining the dental clinic
- Information / assistance to grandparents raising grand children

FOCUS GROUP III – PUTNAM COUNTY

The third focus group was held as a facilitated listening session at the Putnam County Emergency Management Agency office in Hennepin on March, 21st. Participants included:

- Sheila Haage, County Board, health board, several other community organizations
- Toni Lawley, Pharmacist, health board
- Olivia Lawley, BP Power member, Putnam County High School student
- Bob Boehm, Marquis Energy
- Mary Gilbert, teacher, school board member

The group identified the following health concerns in Putnam County:

- Access to mental health providers for all types of services to all ages and incomes
- Type 2 diabetes
 - Obesity
- Attempt suicide among youth (teens)
 - Substances
 - Bullying (in elementary school)
- Cancer
- Awareness of local agricultural and industrial health and safety risks
- Sustaining existing resources for seniors
- Employment
- Access to adult dental care for low income residents and children
- Healthy food for youth outside of school
- Parenting education

The information collected from the focus groups was prepared and presented to the Steering Group as part of their identification and prioritization process.

LOCAL HEALTH INFORMATION

(Secondary/Quantitative Data)

During the course of the planning process staff reviewed several hundred pages of data from multiple sources. The Steering Group reviewed over eighty pages of summaries and reports from this data. That information was compared with the information from the focus groups as part of the process undertaken by the Steering Group. All of the data presented to the Steering Group is set out after the Action Plan section of this report in the interest of flow of the report and ease of reading. Data that the group found particularly significant in view of the focus group information and, in some cases, standing alone, is set out in this section to help the reader better understand the process.

ILLINOIS BEHAVIORAL RISK FACTOR SURVEILLANCE SURVEY

The Illinois BRFSS web page describes that process as follows:

The Behavioral Risk Factor Surveillance System (BRFSS) is a state-based program that gathers information on risk factors among Illinois adults 18 years of age and older through monthly telephone surveys. Established in 1984 as a collaboration between the U.S. Centers for Disease Control and Prevention (CDC) and state health departments, the BRFSS has grown to be the primary source of information on behaviors and conditions related to the leading causes of death for adults in the general population.

The Illinois County Behavioral Risk Factor Surveys (ICBRFS) are conducted for individual counties employing the same procedures and questions as the BRFSS.

For more information about the BRFSS program at CDC, visit that agency's website at www.cdc.gov/brfss.

Alcohol : From 2006 to 2014, alcohol use in adults ages 18 years and older increased by 5.4% in Bureau County, 6.7% in Putnam County and 5.8% in Marshall County, and is higher than the State in all three counties.

State 2014 – 20.3%

Bureau County	Putnam County	Marshall County
2014 – 21%	2014 – 28.9%	2014 - 24.5%
2009 – 18.1%	2009 – 20.9%	2009 – 21.7%
2006 - 15.6%	2006 - 22.2%	2006 – 18.7%

Diabetes: From 2006 to 2014, diabetes incidence in adults ages 18 and older increased by 3.9% in Bureau County, 5.4% in Putnam County and 6.6% in Marshall County and is now higher than the State in all three counties.

State 2014 – 10.2%

Bureau County	Putnam County	Marshall County
2014 – 11.8%	2014 – 12%	2014 – 13.7%
2009 – 7.5%	2009 – 7.1%	2009 – 10.5%
2006 – 7.9%	2006 – 6.7%	2006 – 7.1%

Tobacco: From 2006 to 2014, tobacco use in adults ages 18 and older increased by 1.6% in Bureau County, 6.4% in Putnam County and 6% in Marshall County and is now higher than the State in all three counties.

State 14 – 16.7%

Bureau County	Putnam County	Marshall County
2014 – 20.4%	2014 – 28.5%	2014 – 22.4%
2009 - 20.2%	2009 – 22%	2009 – 19.3%
2006 – 18.8%	2006 – 22.1%	2006 – 16.4%

Data from multiple sources consolidated in a Community Commons Report:

Families with Children

According to the most recent the American Community Survey estimates, 27.98% of all occupied households in the report area are family households with one or more child(ren) under the age of 18. As defined by the US Census Bureau, a family household is any housing unit in which the householder is living with one or more individuals related to him or her by birth, marriage, or adoption. A non-family household is any household occupied by the householder alone, or by the householder and one or more unrelated individuals.

Report Area	Total Households	Total Family Households	Families with Children (Under Age 18)	Families with Children (Under Age 18), Percent of Total Households
Report Area	21,469	14,290	6,006	27.98%
Bureau County, IL	14,023	9,388	4,038	28.8%
Marshall County, IL	4,993	3,235	1,293	25.9%
Putnam County, IL	2,453	1,667	675	27.52%
Illinois	4,786,388	3,124,683	1,528,784	31.94%
United States	116,926,305	77,260,546	37,419,210	32%

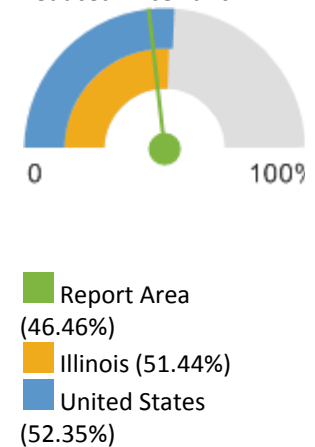
Data Source: US Census Bureau, American Community Survey. 2011-15. Source geography: Tract

Children Eligible for Free/Reduced Price Lunch

Within the report area 3,686 public school students or 46.46% are eligible for Free/Reduced Price lunch out of 8,076 total students enrolled. This indicator is relevant because it assesses vulnerable populations which are more likely to have multiple health access, health status, and social support needs. Additionally, when combined with poverty data, providers can use this measure to identify gaps in eligibility and enrollment.

Report Area	Total Students	Number Free/Reduced Price Lunch Eligible	Percent Free/Reduced Price Lunch Eligible
Report Area	8,076	3,686	46.46%
Bureau County, IL	5,441	2,601	49.09%
Marshall County, IL	1,717	794	46.24%
Putnam County, IL	918	291	31.7%
Illinois	2,049,231	1,044,588	51.44%
United States	50,195,195	26,012,902	52.35%

Percent Students Eligible for Free or Reduced Price Lunch



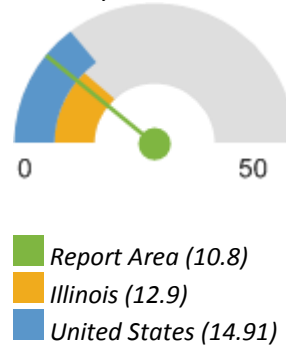
Data Source: National Center for Education Statistics, NCES - Common Core of Data. 2013-14. Source geography: Address

Food Insecurity Rate

This indicator reports the estimated percentage of the population that experienced food insecurity at some point during the report year. Food insecurity is the household-level economic and social condition of limited or uncertain access to adequate food.

Report Area	Total Population	Food Insecure Population, Total	Food Insecurity Rate
Report Area	52,575	5,680	10.8%
Bureau County, IL	34,361	3,770	10.97%
Marshall County, IL	12,319	1,280	10.39%
Putnam County, IL	5,895	630	10.69%
Illinois	12,880,580	1,658,280	12.9%
United States	318,198,163	47,448,890	14.91%

Percentage of Total Population with Food Insecurity



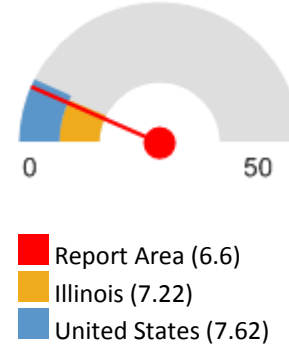
Data Source: Feeding America. 2014. Source geography: County

Head Start

This indicator reports the number and rate of Head Start program facilities per 10,000 children under age 5. Head Start facility data is acquired from the US Department of Health and Human Services (HHS) 2015 Head Start locator. Population data is from the 2010 US Decennial Census.

Report Area	Total Children Under Age 5	Total Head Start Programs	Head Start Programs, Rate (Per 10,000 Children)
Report Area	3,029	2	6.6
Bureau County, IL	2,036	1	4.91
Marshall County, IL	681	1	14.68
Putnam County, IL	312	no data	no data
Illinois	835,577	659	7.22
United States	20,426,118	17,442	7.62

Head Start Programs Rate
10,000 Children Under Ag



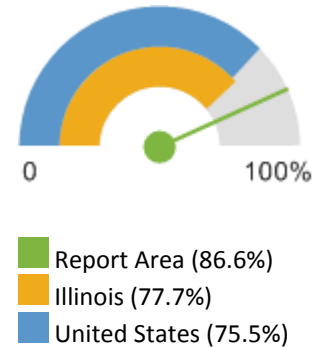
Data Source: US Department of Health Human Services, Administration for Children and Families. 2014. Source geography: Point

High School Graduation Rate (NCES)

Within the report area 86.6% of students are receiving their high school diploma within four years. This is greater than the Healthy People 2020 target of 82.4. This indicator is relevant because research suggests education is one the strongest predictors of health (Freudenberg Ruglis, 2007).

Report Area	Average Freshman Base Enrollment	Estimated Number of Diplomas Issued	On-Time Graduation Rate
Report Area	673	583	86.6
Bureau County, IL	449	378	84.2
Marshall County, IL	154	144	93.5
Putnam County, IL	70	61	86.5
Illinois	169,361	131,670	77.7
United States	4,024,345	3,039,015	75.5
<u>HP 2020 Target</u>			> =82.4

On-Time Graduation Rate



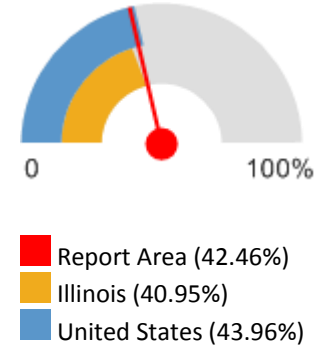
Data Source: National Center for Education Statistics, NCES - Common Core of Data. 2008-09. Source geography: County

Poverty - Children Below 200% FPL

In the report area 42.46% or 4,693 children are living in households with income below 200% of the Federal Poverty Level (FPL). This indicator is relevant because poverty creates barriers to access including health services, healthy food, and other necessities that contribute to poor health status.

Report Area	Total Population Under Age 18	Population Under Age 18 at or Below 200% FPL	Percent Population Under Age 18 at or Below 200% FPL
Report Area	11,054	4,693	42.46%
Bureau County, IL	7,412	3,200	43.17%
Marshall County, IL	2,469	1,014	41.07%
Putnam County, IL	1,173	479	40.84%
Illinois	2,980,437	1,220,538	40.95%
United States	72,540,829	31,888,028	43.96%

Percent Population Under Age 18 at or Below 200% FPL



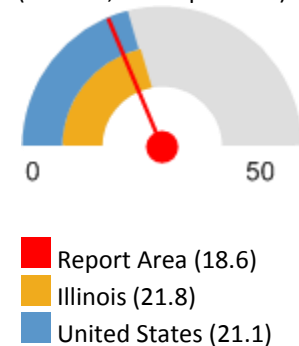
Data Source: US Census Bureau, American Community Survey. 2011-15.
Source geography: Tract

Food Access - Grocery Stores

This indicator reports the number of grocery stores per 100,000 population. Grocery stores are defined as supermarkets and smaller grocery stores primarily engaged in retailing a general line of food, such as canned and frozen foods; fresh fruits and vegetables; and fresh and prepared meats, fish, and poultry. Included are delicatessen-type establishments. Convenience stores and large general merchandise stores that also retail food, such as supercenters and warehouse club stores are excluded. This indicator is relevant because it provides a measure of healthy food access and environmental influences on dietary behaviors.

Report Area	Total Population	Number of Establishments	Establishments, Rate per 100,000 Population
Report Area	53,624	10	18.6
Bureau County, IL	34,978	5	14.29
Marshall County, IL	12,640	3	23.73
Putnam County, IL	6,006	2	33.3
Illinois	12,830,632	2,799	21.8
United States	312,732,537	65,975	21.1

Grocery Stores, Rate (Per 100,000 Population)



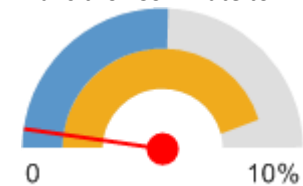
Data Source: US Census Bureau, County Business Patterns. Additional data analysis by CARES. 2014. Source geography: County

Use of Public Transportation

This indicator reports the percentage of population using public transportation as their primary means of commute to work. Public transportation includes buses or trolley buses, streetcars or trolley cars, subway or elevated rails, and ferryboats.

Report Area	Total Population Employed Age 16	Population Using Public Transit for Commute to Work	Percent Population Using Public Transit for Commute to Work
Report Area	24,275	112	0.46%
Bureau County, IL	15,988	112	0.7%
Marshall County, IL	5,550	0	0%
Putnam County, IL	2,737	0	0%
Illinois	5,983,836	544,295	9.1%
United States	143,621,171	7,362,038	5.13%

Percent Population Using Public Transit for Commute to Work



■ Report Area (0.46%)
■ Illinois (9.1%)
■ United States (5.13%)

Data Source: US Census Bureau, American Community Survey. 2011-15.

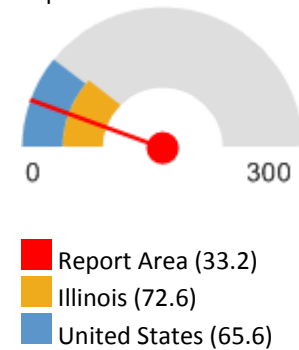
Source geography: Tract

Access to Dentists

This indicator reports the number of dentists per 100,000 population. This indicator includes all dentists - qualified as having a doctorate in dental surgery (D.D.S.) or dental medicine (D.M.D.), who are licensed by the state to practice dentistry and who are practicing within the scope of that license.

Report Area	Total Population, 2015	Dentists, 2015	Dentists, Rate per 100,000 Pop.
Report Area	51,213	17	33.2
Bureau County, IL	33,587	11	32.75
Marshall County, IL	11,982	4	33.38
Putnam County, IL	5,644	2	35.44
Illinois	12,859,995	9,336	72.6
United States	321,418,820	210,832	65.6

Dentists, Rate per 100,000 Pop.



Data Source: US Department of Health Human Services, Health Resources and Services Administration, Area Health Resource File. 2015. Source geography: County

Access to Mental Health Providers

This indicator reports the rate of the county population to the number of mental health providers including psychiatrists, psychologists, clinical social workers, and counsellors that specialize in mental health care.

Report Area	Estimated Population	Number of Mental Health Providers	Ratio of Mental Health Providers to Population (1 Provider per x Persons)	Mental Health Care Provider Rate (Per 100,000 Population)
Report Area	33,838	21	1,611.3	62
Bureau County, IL	33,838	21	1,611.3	62
Marshall County, IL	0	0	no data	no data
Putnam County, IL	0	0	no data	no data
Illinois	12,806,917	23,090	554.7	180.2
United States	317,105,555	643,219	493	202.8

Mental Health Care Provider Rate (Per 100,000 Population)



■ Report Area (62)
■ Illinois (180.2)
■ United States (202.8)

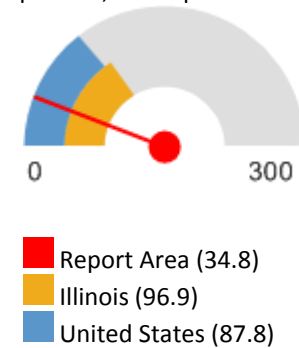
Data Source: University of Wisconsin Population Health Institute, County Health Rankings. 2016. Source geography: County

Access to Primary Care

This indicator reports the number of primary care physicians per 100,000 population. Doctors classified as "primary care physicians" by the AMA include: General Family Medicine MDs and DOs, General Practice MDs and DOs, General Internal Medicine MDs and General Pediatrics MDs. Physicians age 75 and over and physicians practicing sub-specialties within the listed specialties are excluded. This indicator is relevant because a shortage of health professionals contributes to access and health status issues.

Report Area	Total Population, 2014	Primary Care Physicians, 2014	Primary Care Physicians, Rate per 100,000 Pop.
Report Area	51,668	18	34.8
Bureau County, IL	33,840	17	50.24
Marshall County, IL	12,014	0	0
Putnam County, IL	5,814	1	17.2
Illinois	12,880,580	12,477	96.9
United States	318,857,056	279,871	87.8

Primary Care Physicians, Rate per 100,000 Pop.



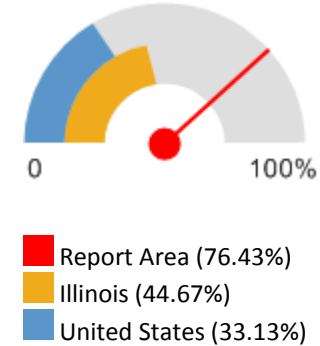
Data Source: US Department of Health Human Services, Health Resources and Services Administration, Area Health Resource File. 2014. Source geography: County

Population Living in a Health Professional Shortage Area

This indicator reports the percentage of the population that is living in a geographic area designated as a "Health Professional Shortage Area" (HPSA), defined as having a shortage of primary medical care, dental or mental health professionals. This indicator is relevant because a shortage of health professionals contributes to access and health status issues.

Report Area	Total Area Population	Population Living in a HPSA	Percentage of Population Living in a HPSA
Report Area	53,624	40,984	76.43%
Bureau County, IL	34,978	34,978	100%
Marshall County, IL	12,640	0	0%
Putnam County, IL	6,006	6,006	100%
Illinois	12,830,632	5,731,457	44.67%
United States	308,745,538	102,289,607	33.13%

Percentage of Population Living in a HPSA



Data Source: US Department of Health Human Services, Health Resources and Services Administration, Health Resources and Services Administration. April 2016. Source geography: HPSA

Alcohol Consumption

This indicator reports the percentage of adults aged 18 and older who self-report heavy alcohol consumption (defined as more than two drinks per day on average for men and one drink per day on average for women). This indicator is relevant because current behaviors are determinants of future health and this indicator may illustrate a cause of significant health issues, such as cirrhosis, cancers, and untreated mental and behavioral health needs.

Report Area	Total Population Age 18	Estimated Adults Drinking Excessively	Estimated Adults Drinking Excessively (Crude Percentage)	Estimated Adults Drinking Excessively (Age-Adjusted Percentage)
Report Area	41,438	6,069	22.6%	28.8%
Bureau County, IL	26,853	6,069	22.6%	25.4%
Marshall County, IL	9,914	no data	suppressed	37.9%
Putnam County, IL	4,671	no data	suppressed	suppressed
Illinois	9,654,603	1,930,921	20%	20.4%
United States	232,556,016	38,248,349	16.4%	16.9%

Estimated Adults Drinking Excessively (Age-Adjusted Percentage)



■ Report Area (28.8%)
■ Illinois (20.4%)
■ United States (16.9%)

Data Source: Centers for Disease Control and Prevention, Behavioral Risk Factor Surveillance System. Accessed via the Health Indicators Warehouse. US Department of Health Human Services, Health Indicators Warehouse. 2006-12. Source geography: County

Cancer Incidence - Lung

This indicator reports the age adjusted incidence rate (cases per 100,000 population per year) of colon and rectum cancer adjusted to 2000 U.S. standard population age groups (Under age 1, 1-4, 5-9, 80-84, 85 and older). This indicator is relevant because cancer is a leading cause of death and it is important to identify cancers separately to better target interventions.

Report Area	Estimated Total Population	New Cases (Annual Average)	Cancer Incidence Rate (Per 100,000 Pop.)
Report Area	7,888	53	67.18
Bureau County, IL	4,885	34	69.6
Marshall County, IL	2,051	12	58.5
Putnam County, IL	952	7	73.5
Illinois	1,370,544	9,306	67.9
United States	33,999,704	212,905	62.62

Annual Lung Cancer Incidence Rate
(Per 100,000 Pop.)



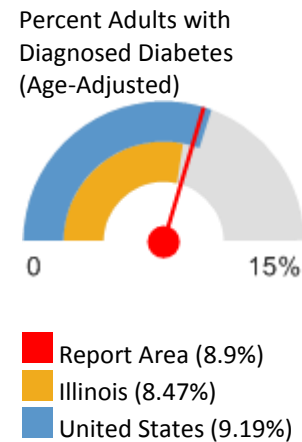
■ Report Area (67.18)
■ Illinois (67.9)
■ United States (62.62)

Data Source: State Cancer Profiles. 2009-13. Source geography: County

Diabetes (Adult)

This indicator reports the percentage of adults aged 20 and older who have ever been told by a doctor that they have diabetes. This indicator is relevant because diabetes is a prevalent problem in the U.S.; it may indicate an unhealthy lifestyle and puts individuals at risk for further health issues.

Report Area	Total Population Age 20	Population with Diagnosed Diabetes	Population with Diagnosed Diabetes, Crude Rate	Population with Diagnosed Diabetes, Age-Adjusted Rate
Report Area	39,773	4,449	11.19	8.9%
Bureau County, IL	25,920	2,929	11.3	9.1%
Marshall County, IL	9,339	1,046	11.2	8.7%
Putnam County, IL	4,514	474	10.5	8.2%
Illinois	9,507,158	864,658	9.09	8.47%
United States	236,919,508	23,685,417	10	9.19%



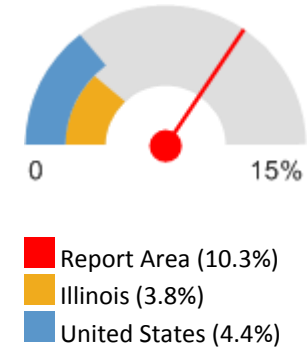
Data Source: Centers for Disease Control and Prevention, National Center for Chronic Disease Prevention and Health Promotion. 2013. Source geography: County

Heart Disease (Adult)

2,851, or 10.3% of adults aged 18 and older have ever been told by a doctor that they have coronary heart disease or angina. This indicator is relevant because coronary heart disease is a leading cause of death in the U.S. and is also related to high blood pressure, high cholesterol, and heart attacks.

Report Area	Survey Population (Adults Age 18)	Total Adults with Heart Disease	Percent Adults with Heart Disease
Report Area	27,728	2,851	10.3%
Bureau County, IL	27,728	2,851	10.3%
Marshall County, IL	no data	no data	no data
Putnam County, IL	no data	no data	no data
Illinois	9,681,141	369,926	3.8%
United States	236,406,904	10,407,185	4.4%

Percent Adults with Heart Disease



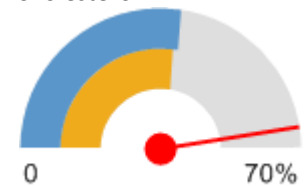
Data Source: Centers for Disease Control and Prevention, Behavioral Risk Factor Surveillance System. Additional data analysis by CARES. 2011-12. Source geography: County

High Cholesterol (Adult)

This indicator reports the percentage of adults aged 18 and older who self-report that they have ever been told by a doctor, nurse, or other health professional that they had high blood cholesterol.

Report Area	Survey Population (Adults Age 18)	Total Adults with High Cholesterol	Percent Adults with High Cholesterol
Report Area	18,512	12,318	66.54%
Bureau County, IL	18,512	12,318	66.54%
Marshall County, IL	no data	no data	no data
Putnam County, IL	no data	no data	no data
Illinois	7,348,647	2,794,348	38.03%
United States	180,861,326	69,662,357	38.52%

Percent Adults with High Cholesterol



■ Report Area (66.54%)
■ Illinois (38.03%)
■ United States (38.52%)

Data Source: Centers for Disease Control and Prevention, Behavioral Risk Factor Surveillance System. Additional data analysis by CARES. 2011-12. Source geography: County

Mortality - Suicide

This indicator reports the rate of death due to intentional self-harm (suicide) per 100,000 population. Figures are reported as crude rates, and as rates age-adjusted to year 2000 standard. Rates are resummarized for report areas from county level data, only where data is available. This indicator is relevant because suicide is an indicator of poor mental health.

Report Area	Total Population	Average Annual Deaths, 2010-2014	Crude Death Rate (Per 100,000 Pop.)	Age-Adjusted Death Rate (Per 100,000 Pop.)
Report Area	52,590	7	15	14
Bureau County, IL	34,362	5	14.55	14
Marshall County, IL	12,333	2	16.22	no data
Putnam County, IL	5,895	0	no data	no data
Illinois	12,867,528	1,283	9.97	9.7
United States	313,836,267	40,466	12.89	12.5
<u>HP 2020 Target</u>				<= 10.2

Suicide, Age-Adjusted Death Rate (Per 100,000 Pop.)



■ Report Area (14)
■ Illinois (9.7)
■ United States (12.5)

Data Source: Centers for Disease Control and Prevention, National Vital Statistics System. Accessed via CDC WONDER. 2010-14. Source geography: County

Mortality - Unintentional Injury

This indicator reports the rate of death due to unintentional injury (accident) per 100,000 population. Figures are reported as crude rates, and as rates age-adjusted to year 2000 standard. Rates are resummarized for report areas from county level data, only where data is available. This indicator is relevant because accidents are a leading cause of death in the U.S.

Report Area	Total Population	Average Annual Deaths, 2010-2014	Crude Death Rate (Per 100,000 Pop.)	Age-Adjusted Death Rate (Per 100,000 Pop.)
Report Area	52,590	28	52.9	48
Bureau County, IL	34,362	20	57.04	50.1
Marshall County, IL	12,333	6	45.41	42
Putnam County, IL	5,895	3	44.11	no data
Illinois	12,867,528	4,361	33.89	32.7
United States	313,836,267	128,295	40.88	39.2
<u>HP 2020 Target</u>				<= 36.0

Unintentional Injury (Accident) Mortality, Age-Adjusted Death Rate (Per 100,000 Pop.)



■ Report Area (48)
■ Illinois (32.7)
■ United States (39.2)

Data Source: Centers for Disease Control and Prevention, National Vital Statistics System. Accessed via CDC WONDER. 2010-14. Source geography: County

ISSUES IDENTIFICATION

Steering Group

The steering group, comprised of representatives from all three focus groups and representing all three counties, met on April 6, 2017 to identify significant health needs. The group reviewed notes from the focus groups and summaries of data presented by staff which included information from Community Commons, Illinois Department of Public Health, CDC, USDA, Illinois Department of Labor, HRSA, County Health Rankings and Roadmaps, National Cancer Institute and other resources.

The group considered and discussed the secondary data and reviewed the health concerns and needs identified in the focus groups. The group identified and discussed common threads from the information reviewed and determined to identify needs that had the potential to impact as many of the concerns and issues emerging from the process as possible.

Following the review, the group identified the following as being significant health needs facing Bureau, Putnam and Marshall Counties.

1. Improved Access to Services

- a. Mental Health**
- b. Medical Specialists**
- c. Dental Care**
- d. Information About Available Local Health Services**
- e. Marshall County - Transportation**

2. Improved Health Through Relationships - Focusing on Youth and Seniors

- a. Education**
- b. Outreach**
- c. Partnerships**
- d. Reducing Isolation**

3. Improved Access to Healthy Foods and Nutrition Information

4. Address Substance Use, Substance Misuse and Substance Use Disorders

ACTION PLAN

Plan

The Management Team, joined by the Public Health Planner and the Marshall County Nurse, met on April 7th to review the needs identification process and outcomes and then set out to develop action items to be taken over the next five years to attempt to meet the identified needs. A second meeting, that included the Management Team and the Administrator, was held on April 25th. The team identified action steps, decided on anticipated outcomes of the steps, determined which health department staff or sections would need to be involved in the steps and then identified potential community partners for the steps.

1. Improved Access to Services

- a. Mental Health**
- b. Medical Specialists**
- c. Dental Care**
- d. Information About Available Local Health Services**
- e. Marshall County - Transportation**

Actions the Bureau, Putnam & Marshall Health Department intends to take to address the health need

- 1. Consolidate the WIC resources manuals for each county, information about specialist care availability, mental health related services and other resources into one electronic information source that can be updated and indexed. The information source should be promoted for use by hospitals, medical providers, libraries, local government offices, senior centers and other public locations. The front desks at the health departments should be advertised and otherwise promoted as call in locations for persons who do not utilize electronic resources.**
- 2. Explore dental care needs and possible solutions across Bureau, Putnam and Marshall Counties.**
- 3. Identify primary care physicians that take new patients, especially patients utilizing Medicaid, and promote primary care physician relationships through public information and education.**
- 4. Explore transportation issues and possible solutions in Marshall County.**
- 5. Explore ways to increase veteran's access to mental health services.**

Anticipated impacts of these actions

It is anticipated that these four action items will help to significantly address many access issues raised through the IPLAN process. Throughout the discussions during the process it became clear that in many cases there was a lack of understanding of the extent of services available to residents in each of the counties. Creating a comprehensive and accurate source of information for services, that will improve access across many areas of concern.

Similarly, encouraging the establishment of primary care relationships will serve to address many access hurdles for those patients that enter into and maintain a primary care relationship.

Dental needs were identified as a concern in differing degrees across the three counties. Those concerns need to be explored and solutions need to be sought based on local need and resources available within and outside of public health.

In Marshall County, there is concern with the availability of public transportation for non-emergency medical and other needs. It is not clear if the issue is one of promotion of available local resources or if it is a case where additional resources need to be explored.

Programs and resources the Bureau, Putnam & Marshall Health Department plans to commit to address the health need

- WIC
- Nursing
- Health Education
- Front desks
- Administration
- Public Health Planning
- Technical Services

Planned collaboration between the Bureau, Putnam & Marshall Health Department and other agencies or organizations:

- Tri-County Opportunities Council
- Perry Memorial Hospital
- St. Margaret's Hospital
- Illinois Valley Dental Society
- Dental school programs
- CPASA
- MSW Transportation
- Senior Centers
- LaSalle Veteran's Clinic
- Local medical providers and pharmacies

2. Improved Health Through Relationships - Focusing on Youth and Seniors

- a. Education**
- b. Outreach**
- c. Partnerships**
- d. Reducing Isolation**

Actions the Bureau, Putnam & Marshall Health Department intends to take to address the health need:

- 1. Expanded youth outreach following the model of BP-Power**
- 2. Promote “Each One Reach One,” and “Neighbor To Neighbor” relationships for and among youth and seniors.**
- 3. Explore partnerships for senior outreach.**
- 4. Explore partnerships for youth outreach.**
- 5. Explore promoting/establishing “Me Too” groups for persons who may be facing stress unaware that they are not alone. Examples may range from LGBTQ to youth with incarcerated parents among others.**

Anticipated impacts of these actions:

The actions selected for the five year plan utilize outreach, new and expanded partnerships and education to reduce isolation among youth and senior citizens in particular. Fostering healthy relationships is expected to improve the overall health of many in our community who are, or feel, alone.

Programs and resources the Bureau, Putnam & Marshall Health Department plans to commit to address the health need:

- Health Education
- Nursing
- Administration

Planned collaboration between the Bureau, Putnam & Marshall Health Department and other agencies or organizations:

- Senior centers
- CPASA
- Churches, and parish nurses
- Schools
- Existing programs
- MRC
- Local governments

- Interested individuals
- Local or area LGBTQ groups

3. Improved Access to Healthy Foods and Nutrition Information

Actions the Bureau, Putnam & Marshall Health Department intends to take to address the health need:

- 1. Explore community gardens.**
- 2. Explore promoting SHARE programs.**
- 3. Explore promoting farmers markets.**
- 4. Promote community food pantries.**
- 5. Explore community fruit tree planting.**
- 6. Explore summer feeding programs for youth.**
- 7. Highlight nutrition at health fairs, community events and with food access programs.**
- 8. Identify and better utilize existing local resources for nutrition information and education.**

Anticipated impacts of these actions:

These steps have the very real potential to improve access to healthy foods, healthy food preparation and nutrition information.

Programs and resources the Bureau, Putnam & Marshall Health Department plans to commit to address the health need:

- Nutritionist
- Health Education
- WIC
- Environmental Protection
- Public Health Planning
- Administration

Planned collaboration between the Bureau, Putnam & Marshall Health Department and other agencies or organizations:

- Nutritionists

- Hospitals
- Local Governments
- Farmers Markets
- Soil and Water Conservation Districts
- University of Illinois Extension
- Schools
- Churches
- “Buddy Bags” programs
- Community groups
- Tri-Counties Opportunities Council
- Food Pantries
- Cornerstone
- Park Districts
- MRC
- CPASA
- BP-Power
- Gateway
- Interested individuals

4. Address Substance Use, Substance Misuse and Substance Use Disorders

Actions the Bureau, Putnam & Marshall Health Department intends to take to address the health need:

- 1. Continue to monitor substance use information monitoring and provide information to the public in Bureau and Putnam Counties and expand those efforts to include Marshall County**
- 2. Continue substance misuse prevention efforts in Bureau and Putnam Counties and expand those efforts to include Marshall County**
- 3. Expand programs and partners to address substance misuse and substance abuse disorder in all three counties.**
- 4. Maintain and expand reliable local data on substance use, misuse and substance disorders.**
- 5. Expand the Prescription Drug Take Back Program to Marshall County.**
- 6. Explore implementing needle exchange programs.**

Anticipated impacts of these actions:

It is expected that these steps will help to foster responsible substance use and reduce local substance misuse and the devastating impact of substance abuse disorders.

Programs and resources the Bureau, Putnam & Marshall Health Department plans to commit to address the health need:

- Health Education
- Administration
- Nursing
- Public Health Planning

Planned collaboration between the Bureau, Putnam & Marshall Health Department and other agencies or organizations:

- CPASA
- MRC
- BP-Power
- Hospitals
- Mental Health Professionals
- Churches
- Schools
- Interested individuals
- Lee County Health Department (needle exchange program)
- Local substance use recovery programs
- Pharmacies
- Local medical providers
- IDPH

LOCAL HEALTH INFORMATION

(Secondary/Quantitative Data)

The *County Health Rankings* rank the health of nearly every county in the nation and show that much of what affects health occurs outside of the doctor's office. The *County Health Rankings* confirm the critical role that factors such as education, jobs, income, and environment play in how healthy people are and how long they live.

Published by the University of Wisconsin Population Health Institute and the Robert Wood Johnson Foundation, the *Rankings* help counties understand what influences how healthy residents are and how long they will live. The Rankings look at a variety of measures that affect health such as the rate of people dying before age 75, high school graduation rates, access to healthier foods, air pollution levels, income, and rates of smoking, obesity and teen births. The *Rankings*, based on the latest data publically available for each county, are unique in their ability to measure the overall health of each county in all 50 states on the multiple factors that influence health. (County Health Rankings and Roadmaps, 2016).

County Health Rankings

Bureau County is ranked 26 out of the 102 Illinois counties in the Rankings released in April 2016. Putnam County is ranked 8 out of the 102 Illinois counties in the Rankings released in April 2016. Marshall County is ranked 44 out of the 102 Illinois counties in the Rankings released in April 2016.

	Bureau	Putnam	Marshall	Illinois
Adults reporting Poor or Fair Health	14%	12%	13%	17%
Adults reporting No leisure physical activity	28%	25%	27%	22%
Adult obesity	30%	31%	32%	27%
Children under 18 living in poverty	20%	15%	16%	20%
Alcohol-impaired driving deaths	27%	67%	31%	36%
Teen Births	26/1,000	16/1,000	25/1000	33/1,000
Uninsured	13%	13%	11%	15%
Unemployment	7.4%	7.8%	7.0%	7.1%

ILLINOIS BEHAVIORAL RISK FACTOR SURVEILLANCE SURVEY

High BP

State 09 - 29%

Bureau County	Putnam County	Marshall County
14 – 31.7%	14 – 31.6%	14 – 30.9%
09 – 31.9%	09 – 31.1%	09 – 31.8%
06 – 30.9%	06 - 27.6%	06 – 32.5%

Arthritis

State 14 – 25.1%

Bureau County	Putnam County	Marshall County
14 – 27.8%	14 – 30%	14 – 35.2%
09 – 30.1%	09 – 30.5%	09 – 29.4%
06 – 36.6%	06 – 36.7%	06 – 34.7%

2014	State	Bureau County	Putnam County	Marshall County
COPD	5.8%	8.8%	8.1%	10.2%
Kidney Disease	2.6%	3.3%	3.2%	3.6%
Skin Cancer	4.2%	5.7%	9.4%	8.2%
Other Cancer	5.4%	6.4%	5.7%	8.5%

The State Cancer Profiles compiled by the National Cancer Institute lists Bureau County and Putnam County at Level 6 for all cancers which means that the cancer rate overall is similar to the U.S. rate and is stable over the recent past. The State Cancer Profiles compiled by the National Cancer Institute lists Marshall County at Level 8 for all cancers which means that the cancer rate overall is similar to the US rate and is falling over the recent past.

Table : County Mortality, 2011

	Bureau County	Putnam County	Marshall County
Diseases of the Heart	94	7	43
Malignant Neoplasms	85	19	23
Lower Respiratory Diseases	21	3	17
Cardiovascular Diseases (Stroke)	31	0	9
Accidents	13	3	4
Alzheimer's disease	11	0	11
Nephritis, Nephrotic Syndrome, and Nephrosis	10	0	4
Diabetes mellitus	7	3	3
Influenza and Pneumonia	12	1	2
Septicemia	4	2	2
Intentional Self Harm (Suicide)	3	0	1
Chronic Liver Disease, cirrhosis	5	0	3
All other causes	80	13	35
Total Deaths	376	51	157

DEMOGRAPHICS

Total Population

A total of 52,110 people live in the 1,415.99 square mile report area defined for this assessment according to the U.S. Census Bureau American Community Survey 2011-15 5-year estimates. The population density for this area, estimated at 36.8 persons per square mile, is less than the national average population density of 89.61 persons per square mile.

Report Area	Total Population	Total Land Area (Square Miles)	Population Density (Per Square Mile)
Report Area	52,110	1,415.99	36.8
Bureau County, IL	34,115	869.03	39.26
Marshall County, IL	12,173	386.79	31.47
Putnam County, IL	5,822	160.16	36.35
Illinois	12,873,761	55,519.52	231.88
United States	316,515,021	3,532,070.45	89.61

Data Source: US Census Bureau, American Community Survey. 2011-15. Source geography: Tract

Total Population by Gender

Report Area	Male	Female	Percent Male	Percent Female
Report Area	25,674	26,436	49.27%	50.73%
Bureau County, IL	16,728	17,387	49.03%	50.97%
Marshall County, IL	6,004	6,169	49.32%	50.68%
Putnam County, IL	2,942	2,880	50.53%	49.47%
Illinois	6,316,899	6,556,862	49.07%	50.93%
United States	155,734,280	160,780,741	49.2%	50.8%

Total Population by Age Groups, Total

Report Area	Age 0-4	Age 5-17	Age 18-24	Age 25-34	Age 35-44	Age 45-54	Age 55-64	Age 65
Report Area	2,801	8,488	3,932	5,398	5,863	7,464	7,813	10,351
Bureau County, IL	1,835	5,755	2,549	3,621	3,940	4,828	4,978	6,609
Marshall County, IL	657	1,834	969	1,168	1,331	1,742	1,861	2,611
Putnam County, IL	309	899	414	609	592	894	974	1,131
Illinois	801,195	2,222,539	1,249,849	1,781,564	1,688,662	1,799,314	1,592,650	1,737,988
United States	19,912,018	53,771,807	31,368,674	42,881,649	40,651,910	43,895,858	39,417,628	44,615,477

Total Population by Race Alone, Total

Report Area	White	Black	Asian	Native American / Alaska Native	Native Hawaiian / Pacific Islander	Some Other Race	Multiple Races
Report Area	49,809	288	320	99	12	936	646
Bureau County, IL	32,362	203	261	76	5	762	446
Marshall County, IL	11,773	73	44	23	7	150	103
Putnam County, IL	5,674	12	15	0	0	24	97
Illinois	9,312,771	1,846,108	645,642	28,363	3,407	747,933	289,537
United States	232,943,055	39,908,095	16,235,305	2,569,170	546,255	14,865,258	9,447,883

Total Population by Ethnicity Alone

Report Area	Total Population	Hispanic or Latino Population	Percent Population Hispanic or Latino	Non-Hispanic Population	Percent Population Non-Hispanic
Report Area	52,110	3,535	6.78%	48,575	93.22%
Bureau County, IL	34,115	2,881	8.44%	31,234	91.56%
Marshall County, IL	12,173	375	3.08%	11,798	96.92%
Putnam County, IL	5,822	279	4.79%	5,543	95.21%
Illinois	12,873,761	2,122,841	16.49%	10,750,920	83.51%
United States	316,515,021	54,232,205	17.13%	262,282,816	82.87%

Change in Total Population

According to the United States Census Bureau Decennial Census, between 2000 and 2010 the population in the report area fell by 1,120 persons, a change of -2.05%. A significant positive or negative shift in total population over time impacts healthcare providers and the utilization of community resources.

Report Area	Total Population, 2000 Census	Total Population, 2010 Census	Total Population Change, 2000-2010	Percent Population Change, 2000-2010
Report Area	54,744	53,624	-1,120	-2.05%
Bureau County, IL	35,503	34,978	-525	-1.48%
Marshall County, IL	13,155	12,640	-515	-3.91%
Putnam County, IL	6,086	6,006	-80	-1.31%
Illinois	12,416,145	12,830,632	414,487	3.34%
United States	280,405,781	307,745,539	27,339,758	9.75%

Data Source: US Census Bureau, Decennial Census. 2000 - 2010. Source geography: Tract

Population Change (2000-2010) by Hispanic Origin

Report Area	Hispanic Population Change, Total	Hispanic Population Change, Percent	Non-Hispanic Population Change, Total	Non-Hispanic Population Change, Percent
Report Area	1,220	59.77%	-2,340	-4.44%
Bureau County, IL	963	55.6%	-1,488	-4.41%
Marshall County, IL	176	127.54%	-691	-5.31%
Putnam County, IL	81	47.37%	-161	-2.72%
Illinois	497,354	32.5%	-82,867	-0.76%
United States	15,152,943	42.93%	12,099,099	4.92%

Total Population Change (2000-2010) by Race

Report Area	White	Black	American Indian / Alaska Native	Asian	Native Hawaiian / Pacific Islander	Other Race	Multiple Race
Report Area	-2,211	88	15	55	-2	739	196
Bureau County, IL	-1,428	96	37	46	-4	591	137
Marshall County, IL	-645	-2	-7	12	1	104	22
Putnam County, IL	-138	-6	-15	-3	1	44	37
Illinois	52,442	-7,376	12,961	163,333	-559	138,703	54,982
United States	12,199,518	5,189,316	521,420	4,433,864	141,446	3,703,567	2,190,889

Percent Population Change (2000-2010) by Race

Report Area	White	Black	American Indian Alaska Native	Asian	Native Hawaiian Pacific Islander	Other Race	Multiple Race
Report Area	-4.15%	44%	13.51%	23.81%	-18.18%	140.49%	44.24%
Bureau County, IL	-4.16%	82.76%	60.66%	25.27%	-40%	129.89%	43.63%
Marshall County, IL	-4.99%	-4.35%	-24.14%	36.36%	100%	315.15%	22.68%
Putnam County, IL	-2.32%	-15.79%	-71.43%	-18.75%	no data	115.79%	115.63%
Illinois	0.57%	-0.39%	41.81%	38.56%	-12.13%	19.19%	23.4%
United States	5.8%	15.43%	22.56%	43.72%	47.37%	24.2%	32.61%

Families with Children

According to the most recent the American Community Survey estimates, 27.98% of all occupied households in the report area are family households with one or more child(ren) under the age of 18. As defined by the US Census Bureau, a family household is any housing unit in which the householder is living with one or more individuals related to him or her by birth, marriage, or adoption. A non-family household is any household occupied by the householder alone, or by the householder and one or more unrelated individuals.

Report Area	Total Households	Total Family Households	Families with Children (Under Age 18)	Families with Children (Under Age 18), Percent of Total Households
Report Area	21,469	14,290	6,006	27.98%
Bureau County, IL	14,023	9,388	4,038	28.8%
Marshall County, IL	4,993	3,235	1,293	25.9%
Putnam County, IL	2,453	1,667	675	27.52%
Illinois	4,786,388	3,124,683	1,528,784	31.94%
United States	116,926,305	77,260,546	37,419,210	32%

Data Source: US Census Bureau, American Community Survey. 2011-15. Source geography: Tract

Median Age

This indicator reports population median age based on the 5-year American Community Survey estimate.

Report Area	Total Population	Median Age
Report Area	52,110	no data
Bureau County, IL	34,115	43.4
Marshall County, IL	12,173	45.9
Putnam County, IL	5,822	46
Illinois	12,873,761	37.3
United States	316,515,021	37.6

Data Source: US Census Bureau, American Community Survey. 2011-15. Source geography: Tract

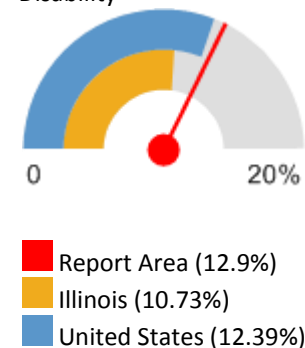
Population with Any Disability

This indicator reports the percentage of the total civilian non-institutionalized population with a disability. This indicator is relevant because disabled individuals comprise a vulnerable population that requires targeted services and outreach by providers.

Report Area	Total Population (For Whom Disability Status Is Determined)	Total Population with a Disability	Percent Population with a Disability
Report Area	51,448	6,635	12.9%
Bureau County, IL	33,724	4,442	13.17%
Marshall County, IL	11,908	1,478	12.41%
Putnam County, IL	5,816	715	12.29%
Illinois	12,694,224	1,362,286	10.73%
United States	311,516,332	38,601,898	12.39%

Data Source: US Census Bureau, American Community Survey. 2011-15. Source geography: Tract

Percent Population with a Disability



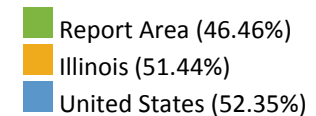
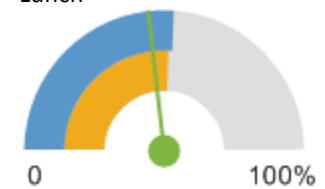
Children Eligible for Free/Reduced Price Lunch

Within the report area 3,686 public school students or 46.46% are eligible for Free/Reduced Price lunch out of 8,076 total students enrolled. This indicator is relevant because it assesses vulnerable populations which are more likely to have multiple health access, health status, and social support needs.

Additionally, when combined with poverty data, providers can use this measure to identify gaps in eligibility and enrollment.

Report Area	Total Students	Number Free/Reduced Price Lunch Eligible	Percent Free/Reduced Price Lunch Eligible
Report Area	8,076	3,686	46.46%
Bureau County, IL	5,441	2,601	49.09%
Marshall County, IL	1,717	794	46.24%
Putnam County, IL	918	291	31.7%
Illinois	2,049,231	1,044,588	51.44%
United States	50,195,195	26,012,902	52.35%

Percent Students Eligible for Free or Reduced Price Lunch



Data Source: National Center for Education Statistics, NCES - Common Core of Data. 2013-14. Source geography: Address

Food Insecurity Rate

This indicator reports the estimated percentage of the population that experienced food insecurity at some point during the report year. Food insecurity is the household-level economic and social condition of limited or uncertain access to adequate food.

Report Area	Total Population	Food Insecure Population, Total	Food Insecurity Rate
Report Area	52,575	5,680	10.8%
Bureau County, IL	34,361	3,770	10.97%
Marshall County, IL	12,319	1,280	10.39%
Putnam County, IL	5,895	630	10.69%
Illinois	12,880,580	1,658,280	12.9%
United States	318,198,163	47,448,890	14.91%

Percentage of Total Population with Food Insecurity



■ Report Area (10.8)
■ Illinois (12.9)
■ United States (14.91)

Data Source: Feeding America. 2014. Source geography: County

Head Start

This indicator reports the number and rate of Head Start program facilities per 10,000 children under age 5. Head Start facility data is acquired from the US Department of Health and Human Services (HHS) 2015 Head Start locator. Population data is from the 2010 US Decennial Census.

Report Area	Total Children Under Age 5	Total Head Start Programs	Head Start Programs, Rate (Per 10,000 Children)
Report Area	3,029	2	6.6
Bureau County, IL	2,036	1	4.91
Marshall County, IL	681	1	14.68
Putnam County, IL	312	no data	no data
Illinois	835,577	659	7.22
United States	20,426,118	17,442	7.62

Head Start Programs Rate
(Per 10,000 Children Under Age 5)



■ Report Area (6.6)
■ Illinois (7.22)
■ United States (7.62)

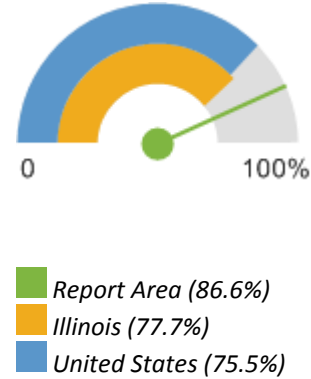
Data Source: US Department of Health Human Services, Administration for Children and Families. 2014. Source geography: Point

High School Graduation Rate (NCES)

Within the report area 86.6% of students are receiving their high school diploma within four years. This is greater than the Healthy People 2020 target of 82.4%. This indicator is relevant because research suggests education is one the strongest predictors of health (Freudenberg Ruglis, 2007).

Report Area	Average Freshman Base Enrollment	Estimated Number of Diplomas Issued	On-Time Graduation Rate
Report Area	673	583	86.6
Bureau County, IL	449	378	84.2
Marshall County, IL	154	144	93.5
Putnam County, IL	70	61	86.5
Illinois	169,361	131,670	77.7
United States	4,024,345	3,039,015	75.5
<u>HP 2020 Target</u>			> =82.4

On-Time Graduation Rate



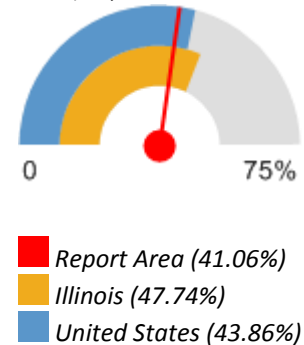
Data Source: National Center for Education Statistics, NCES - Common Core of Data. 2008-09.
Source geography: County

Income - Families Earning Over \$75,000

In the report area, 41.06%, or 5,868 families report a total annual income of \$75,000 or greater. Total income includes all reported income from wages and salaries as well as income from self-employment, interest or dividends, public assistance, retirement, and other sources. As defined by the US Census Bureau, a family household is any housing unit in which the householder is living with one or more individuals related to him or her by birth, marriage, or adoption. A non-family household is any household occupied by the householder alone, or by the householder and one or more unrelated individuals.

Report Area	Total Families	Families with Income Over \$75,000	Percent Families with Income Over \$75,000
Report Area	14,290	5,868	41.06%
Bureau County, IL	9,388	3,676	39.16%
Marshall County, IL	3,235	1,369	42.32%
Putnam County, IL	1,667	823	49.37%
Illinois	3,124,683	1,491,777	47.74%
United States	77,260,546	33,885,974	43.86%

Percent Families with Income Over \$75,000



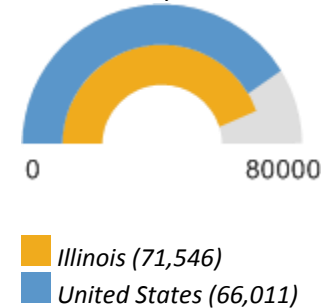
Data Source: US Census Bureau, American Community Survey. 2011-15. Source geography: Tract

Income - Median Family Income

This indicator reports median family income based on the latest 5-year American Community Survey estimates. A family household is any housing unit in which the householder is living with one or more individuals related to him or her by birth, marriage, or adoption. Family income includes the incomes of all family members age 15 and older.

Report Area	Total Family Households	Average Family Income	Median Family Income
Report Area	14,290	\$77,784	no data
Bureau County, IL	9,388	\$76,691	\$63,101
Marshall County, IL	3,235	\$78,929	\$64,984
Putnam County, IL	1,667	\$81,723	\$73,807
Illinois	3,124,683	\$94,076	\$71,546
United States	77,260,546	\$88,153	\$66,011

Median Family Income



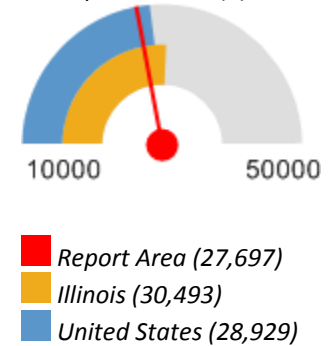
Data Source: US Census Bureau, American Community Survey. 2011-15. Source geography: Tract

Income - Per Capita Income

The per capita income for the report area is \$27,697. This includes all reported income from wages and salaries as well as income from self-employment, interest or dividends, public assistance, retirement, and other sources. The per capita income in this report area is the average (mean) income computed for every man, woman, and child in the specified area.

Report Area	Total Population	Total Income (\$)	Per Capita Income (\$)
Report Area	52,110	\$1,443,313,000	\$27,697
Bureau County, IL	34,115	\$931,465,200	\$27,303
Marshall County, IL	12,173	\$337,666,700	\$27,738
Putnam County, IL	5,822	\$174,181,100	\$29,917
Illinois	12,873,761	\$392,571,217,100	\$30,493
United States	316,515,021	\$9,156,731,836,300	\$28,929

Per Capita Income (\$)



Data Source: US Census Bureau, American Community Survey. 2011-15. Source geography: Tract

Income - Public Assistance Income

This indicator reports the percentage households receiving public assistance income. Public assistance income includes general assistance and Temporary Assistance to Needy Families (TANF). Separate payments received for hospital or other medical care (vendor payments) are excluded. This does not include Supplemental Security Income (SSI) or noncash benefits such as Food Stamps.

Report Area	Total Households	Households with Public Assistance Income	Percent Households with Public Assistance Income
Report Area	21,469	342	1.59%
Bureau County, IL	14,023	225	1.6%
Marshall County, IL	4,993	78	1.56%
Putnam County, IL	2,453	39	1.59%
Illinois	4,786,388	119,651	2.5%
United States	116,926,305	3,223,786	2.76%

Percent Households with Public Assistance Income



■ Report Area (1.59%)
■ Illinois (2.5%)
■ United States (2.76%)

Data Source: US Census Bureau, American Community Survey. 2011-15. Source geography: Tract

Insurance - Population Receiving Medicaid

This indicator reports the percentage of the population with insurance enrolled in Medicaid (or other means-tested public health insurance). This indicator is relevant because it assesses vulnerable populations which are more likely to have multiple health access, health status, and social support needs; when combined with poverty data, providers can use this measure to identify gaps in eligibility and enrollment.

Report Area	Total Population (For Whom Insurance Status is Determined)	Population with Any Health Insurance	Population Receiving Medicaid	Percent of Insured Population Receiving Medicaid
Report Area	51,448	47,178	9,248	19.6%
Bureau County, IL	33,724	30,712	6,215	20.24%
Marshall County, IL	11,908	11,143	2,029	18.21%
Putnam County, IL	5,816	5,323	1,004	18.86%
Illinois	12,694,224	11,295,589	2,357,392	20.87%
United States	311,516,332	271,070,101	57,557,806	21.23%

Percent of Insured Population Receiving Medicaid



■ Report Area (19.6%)
■ Illinois (20.87%)
■ United States (21.23%)

Data Source: US Census Bureau, American Community Survey. 2011-15. Source geography: Tract

Insurance - Uninsured Adults

The lack of health insurance is considered a key driver of health status.

This indicator reports the percentage of adults age 18 to 64 without health insurance coverage. This indicator is relevant because lack of insurance is a primary barrier to healthcare access including regular primary care, specialty care, and other health services that contributes to poor health status.

Report Area	Total Population Age 18 - 64	Population with Medical Insurance	Percent Population With Medical Insurance	Population Without Medical Insurance	Percent Population Without Medical Insurance
Report Area	30,156	26,815	88.92%	3,341	11.08%
Bureau County, IL	19,724	17,409	88.26%	2,315	11.74%
Marshall County, IL	6,942	6,254	90.09%	688	9.91%
Putnam County, IL	3,490	3,152	90.32%	338	9.68%
Illinois	7,910,376	6,800,762	85.97%	1,109,614	14.03%
United States	193,600,545	161,899,011	83.63%	31,701,534	16.37%

Percent Population Without Medical Insurance



■ Report Area (11.08%)
■ Illinois (14.03%)
■ United States (16.37%)

Data Source: US Census Bureau, Small Area Health Insurance Estimates. 2014.

Source geography: County

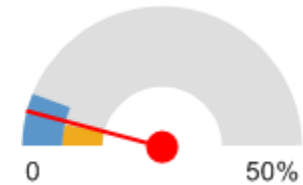
Insurance - Uninsured Children

The lack of health insurance is considered a key driver of health status.

This indicator reports the percentage of children under age 19 without health insurance coverage. This indicator is relevant because lack of insurance is a primary barrier to healthcare access including regular primary care, specialty care, and other health services that contributes to poor health status.

Report Area	Total Population Under Age 19	Population with Medical Insurance	Percent Population With Medical Insurance	Population Without Medical Insurance	Percent Population Without Medical Insurance
Report Area	11,407	10,944	95.94%	463	4.06%
Bureau County, IL	7,679	7,377	96.07%	302	3.93%
Marshall County, IL	2,503	2,391	95.53%	112	4.47%
Putnam County, IL	1,225	1,176	96%	49	4%
Illinois	3,099,273	2,983,260	96.26%	116,013	3.74%
United States	76,146,139	71,365,802	93.72%	4,780,337	6.28%

Percent Population Without Medical Insurance



■ Report Area (4.06%)
■ Illinois (3.74%)
■ United States (6.28%)

Data Source: US Census Bureau, Small Area Health Insurance Estimates. 2014.

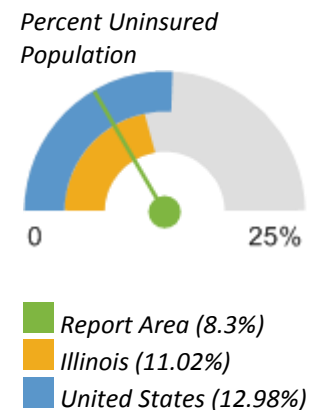
Source geography: County

Insurance - Uninsured Population

The lack of health insurance is considered a key driver of health status.

This indicator reports the percentage of the total civilian non-institutionalized population without health insurance coverage. This indicator is relevant because lack of insurance is a primary barrier to healthcare access including regular primary care, specialty care, and other health services that contributes to poor health status.

Report Area	Total Population (For Whom Insurance Status is Determined)	Total Uninsured Population	Percent Uninsured Population
Report Area	51,448	4,270	8.3%
Bureau County, IL	33,724	3,012	8.93%
Marshall County, IL	11,908	765	6.42%
Putnam County, IL	5,816	493	8.48%
Illinois	12,694,224	1,398,635	11.02%
United States	311,516,332	40,446,231	12.98%



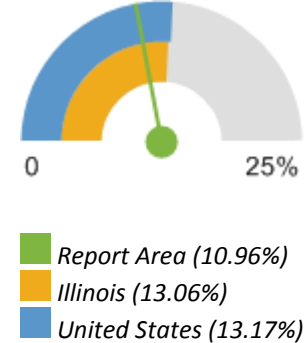
Data Source: US Census Bureau, American Community Survey. 2011-15. Source geography: Tract

Population Receiving SNAP Benefits (ACS)

This indicator reports the estimated percentage of households receiving the Supplemental Nutrition Assistance Program (SNAP) benefits. This indicator is relevant because it assesses vulnerable populations which are more likely to have multiple health access, health status, and social support needs; when combined with poverty data, providers can use this measure to identify gaps in eligibility and enrolment.

Report Area	Total Households	Households Receiving SNAP Benefits	Percent Households Receiving SNAP Benefits
Report Area	21,469	2,352	10.96%
Bureau County, IL	14,023	1,698	12.11%
Marshall County, IL	4,993	403	8.07%
Putnam County, IL	2,453	251	10.23%
Illinois	4,786,388	625,061	13.06%
United States	116,926,305	15,399,651	13.17%

Percent Households Receiving SNAP Benefits



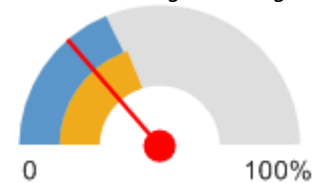
Data Source: US Census Bureau, American Community Survey. 2011-15. Source geography: Tract

Population with Associate's Level Degree or Higher

27.09% of the population aged 25 and older, or 9,995 have obtained an Associate's level degree or higher. This indicator is relevant because educational attainment has been linked to positive health outcomes.

Report Area	Total Population Age 25	Population Age 25 with Associate's Degree or Higher	Percent Population Age 25 with Associate's Degree or Higher
Report Area	36,889	9,995	27.09%
Bureau County, IL	23,976	6,600	27.53%
Marshall County, IL	8,713	2,415	27.72%
Putnam County, IL	4,200	980	23.33%
Illinois	8,600,178	3,436,775	39.96%
United States	211,462,522	79,981,739	37.82%

Percent Population Age 25 with Associate's Degree or Higher



■ Report Area (27.09%)
■ Illinois (39.96%)
■ United States (37.82%)

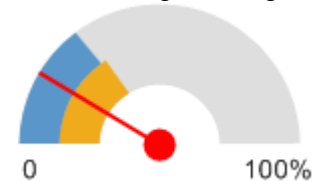
Data Source: US Census Bureau, American Community Survey. 2011-15.
Source geography: Tract

Population with Bachelor's Degree or Higher

17.04% of the population aged 25 and older, or 6,285 have obtained an Bachelor's level degree or higher. This indicator is relevant because educational attainment has been linked to positive health outcomes.

Report Area	Total Population Age 25	Population Age 25 with Bachelor's Degree or Higher	Percent Population Age 25 with Bachelor's Degree or Higher
Report Area	36,889	6,285	17.04%
Bureau County, IL	23,976	4,297	17.92%
Marshall County, IL	8,713	1,464	16.8%
Putnam County, IL	4,200	524	12.48%
Illinois	8,600,178	2,777,871	32.3%
United States	211,462,522	62,952,272	29.77%

Percent Population Age 25 with Bachelor's Degree or Higher



■ Report Area (17.04%)
■ Illinois (32.3%)
■ United States (29.77%)

Data Source: US Census Bureau, American Community Survey. 2011-15. Source geography: Tract

Population with No High School Diploma

Within the report area there are 3,531 persons aged 25 and older without a high school diploma (or equivalency) or higher. This represents 9.57% of the total population aged 25 and older. This indicator is relevant because educational attainment is linked to positive health outcomes ([Freudenberg Ruglis, 2007](#)).

Report Area	Total Population Age 25	Population Age 25 with No High School Diploma	Percent Population Age 25 with No High School Diploma
Report Area	36,889	3,531	9.57%
Bureau County, IL	23,976	2,391	9.97%
Marshall County, IL	8,713	730	8.38%
Putnam County, IL	4,200	410	9.76%
Illinois	8,600,178	1,038,317	12.07%
United States	211,462,522	28,229,094	13.35%

Percent Population Age 25 with No High School Diploma



■ Report Area (9.57%)
■ Illinois (12.07%)
■ United States (13.35%)

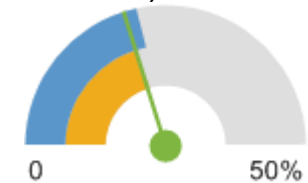
Data Source: US Census Bureau, American Community Survey. 2011-15. Source geography: Tract

Poverty - Children Below 100% FPL

In the report area 20.14% or 2,226 children aged 0-17 are living in households with income below the Federal Poverty Level (FPL). This indicator is relevant because poverty creates barriers to access including health services, healthy food, and other necessities that contribute to poor health status.

Report Area	Total Population	Population Under Age 18	Population Under Age 18 in Poverty	Percent Population Under Age 18 in Poverty
Report Area	51,229	11,054	2,226	20.14%
Bureau County, IL	33,562	7,412	1,526	20.59%
Marshall County, IL	11,886	2,469	402	16.28%
Putnam County, IL	5,781	1,173	298	25.4%
Illinois	12,571,110	2,980,437	603,899	20.26%
United States	308,619,550	72,540,829	15,760,766	21.73%

Percent Population Under Age 18 in Poverty



■ Report Area (20.14%)
■ Illinois (20.26%)
■ United States (21.73%)

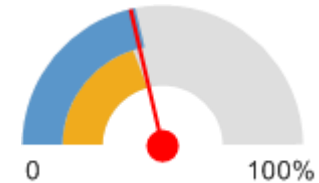
Data Source: US Census Bureau, American Community Survey. 2011-15. Source geography: Tract

Poverty - Children Below 200% FPL

In the report area 42.46% or 4,693 children are living in households with income below 200% of the Federal Poverty Level (FPL). This indicator is relevant because poverty creates barriers to access including health services, healthy food, and other necessities that contribute to poor health status.

Report Area	Total Population Under Age 18	Population Under Age 18 at or Below 200% FPL	Percent Population Under Age 18 at or Below 200% FPL
Report Area	11,054	4,693	42.46%
Bureau County, IL	7,412	3,200	43.17%
Marshall County, IL	2,469	1,014	41.07%
Putnam County, IL	1,173	479	40.84%
Illinois	2,980,437	1,220,538	40.95%
United States	72,540,829	31,888,028	43.96%

Percent Population Under Age 18 at or Below 200% FPL



■ Report Area (42.46%)
■ Illinois (40.95%)
■ United States (43.96%)

Data Source: US Census Bureau, American Community Survey. 2011-15.
Source geography: Tract

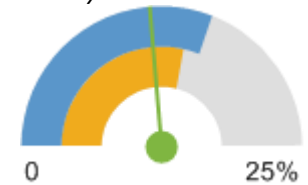
Poverty - Population Below 100% FPL

Poverty is considered a key driver of health status.

Within the report area 11.87% or 6,083 individuals are living in households with income below the Federal Poverty Level (FPL). This indicator is relevant because poverty creates barriers to access including health services, healthy food, and other necessities that contribute to poor health status.

Report Area	Total Population	Population in Poverty	Percent Population in Poverty
Report Area	51,229	6,083	11.87%
Bureau County, IL	33,562	4,191	12.49%
Marshall County, IL	11,886	1,201	10.1%
Putnam County, IL	5,781	691	11.95%
Illinois	12,571,110	1,801,118	14.33%
United States	308,619,550	47,749,043	15.47%

Percent Population in Poverty



Report Area (11.87%)
Illinois (14.33%)
United States (15.47%)

Data Source: US Census Bureau, American Community Survey. 2011-15. Source geography: Tract

Poverty - Population Below 200% FPL

In the report area 30.09% or 15,414 individuals are living in households with income below 200% of the Federal Poverty Level (FPL). This indicator is relevant because poverty creates barriers to access including health services, healthy food, and other necessities that contribute to poor health status.

Report Area	Total Population	Population with Income at or Below 200% FPL	Percent Population with Income at or Below 200% FPL
Report Area	51,229	15,414	30.09%
Bureau County, IL	33,562	10,673	31.8%
Marshall County, IL	11,886	3,192	26.86%
Putnam County, IL	5,781	1,549	26.79%
Illinois	12,571,110	3,970,713	31.59%
United States	308,619,550	105,726,604	34.26%

Percent Population with Income at or Below 200% FPL



■ Report Area (30.09%)
■ Illinois (31.59%)
■ United States (34.26%)

Data Source: US Census Bureau, American Community Survey. 2011-15. Source geography: Tract

Student Reading Proficiency (4th Grade)

This indicator reports the percentage of children in grade 4 whose reading skills tested below the "proficient" level for the English Language Arts portion of the state-specific standardized test. This indicator is relevant because an inability to read English well is linked to poverty, unemployment, and barriers to healthcare access, provider communications, and health literacy/education.

Report Area	Total Students with Valid Test Scores	Percentage of Students Scoring 'Proficient' or Better	Percentage of Students Scoring 'Not Proficient' or Worse
Report Area	536	28.92%	71.08%
Bureau County, IL	339	25.63%	74.37%
Marshall County, IL	127	33.9%	66.1%
Putnam County, IL	70	35.05%	64.95%
Illinois	144,944	39.33%	60.67%
United States	3,393,582	49.67%	45.61%

Percentage of Students Scoring 'Not Proficient' or Worse



■ Report Area (71.08%)
■ Illinois (60.67%)
■ United States (45.61%)

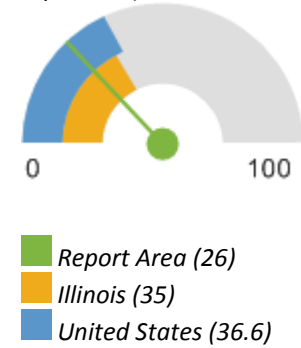
Data Source: US Department of Education, EDData. Accessed via DATA.GOV. 2014-15. Source geography: School District

Teen Births

This indicator reports the rate of total births to women age of 15 - 19 per 1,000 female population age 15 - 19. This indicator is relevant because in many cases, teen parents have unique social, economic, and health support services. Additionally, high rates of teen pregnancy may indicate the prevalence of unsafe sex practices.

Report Area	Female Population Age 15 - 19	Births to Mothers Age 15 - 19	Teen Birth Rate (Per 1,000 Population)
Report Area	1,731	45	26
Bureau County, IL	1,138	32	28.2
Marshall County, IL	436	10	22.4
Putnam County, IL	157	3	17.8
Illinois	448,356	15,692	35
United States	10,736,677	392,962	36.6

Teen Birth Rate (Per 1,000 Population)



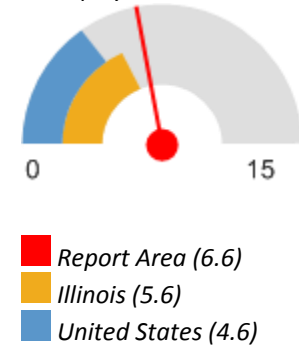
Data Source: US Department of Health Human Services, Health Indicators Warehouse. Centers for Disease Control and Prevention, National Vital Statistics System. Accessed via CDC WONDER. 2006-12. Source geography: County

Unemployment Rate

Total unemployment in the report area for the current month (12/16) was 1,668, or 6.6% of the civilian non-institutionalized population age 16 and older (non-seasonally adjusted). This indicator is relevant because unemployment creates financial instability and barriers to access including insurance coverage, health services, healthy food, and other necessities that contribute to poor health status.

Report Area	Labor Force	Number Employed	Number Unemployed	Unemployment Rate
Report Area	25,264	23,596	1,668	6.6
Bureau County, IL	16,663	15,566	1,097	6.6
Marshall County, IL	5,594	5,190	404	7.2
Putnam County, IL	3,007	2,840	167	5.6
Illinois	6,512,493	6,149,528	362,965	5.6
United States	160,118,484	152,809,923	7,308,561	4.6

Unemployment Rate



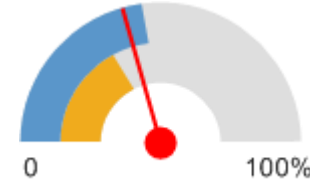
Data Source: US Department of Labor, Bureau of Labor Statistics. 2016 - December.
Source geography: County

Climate Health - Drought Severity

This indicator reports the population-weighted percentage of weeks in drought between January 1, 2012 and December 31, 2014.

Report Area	Percentage of Weeks in D0 (Abnormally Dry)	Percentage of Weeks in D1 (Moderate Drought)	Percentage of Weeks in D2 (Severe Drought)	Percentage of Weeks in D3 (Extreme Drought)	Percentage of Weeks in D4 (Exceptional Drought)	Percentage of Weeks in Drought (Any)
Report Area	13.7%	15.72%	11.27%	0.54%	0%	41.23%
Bureau County, IL	14.63%	16.8%	12.01%	0.53%	0%	43.97%
Marshall County, IL	11.87%	12.72%	9.9%	0.83%	0%	35.32%
Putnam County, IL	12.09%	15.77%	9.86%	0%	0%	37.71%
Illinois	18.12%	11.69%	3.52%	1.23%	0.08%	34.63%
United States	16.96%	12.59%	8.84%	4.92%	2.54%	45.85%

Percentage of Weeks in Drought (Any)



■ Report Area (41.23%)
■ Illinois (34.63%)
■ United States (45.85%)

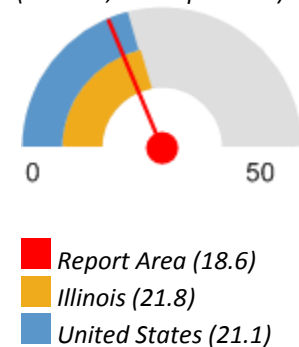
Data Source: US Drought Monitor. 2012-14. Source geography: County

Food Access - Grocery Stores

This indicator reports the number of grocery stores per 100,000 population. Grocery stores are defined as supermarkets and smaller grocery stores primarily engaged in retailing a general line of food, such as canned and frozen foods; fresh fruits and vegetables; and fresh and prepared meats, fish, and poultry. Included are delicatessen-type establishments. Convenience stores and large general merchandise stores that also retail food, such as supercenters and warehouse club stores are excluded. This indicator is relevant because it provides a measure of healthy food access and environmental influences on dietary behaviors.

Report Area	Total Population	Number of Establishments	Establishments, Rate per 100,000 Population
Report Area	53,624	10	18.6
Bureau County, IL	34,978	5	14.29
Marshall County, IL	12,640	3	23.73
Putnam County, IL	6,006	2	33.3
Illinois	12,830,632	2,799	21.8
United States	312,732,537	65,975	21.1

Grocery Stores, Rate (Per 100,000 Population)



Data Source: US Census Bureau, County Business Patterns. Additional data analysis by CARES. 2014. Source geography: County

Food Access - Low Food Access

This indicator reports the percentage of the population living in census tracts designated as food deserts. A food desert is defined as a low-income census tract (where a substantial number or share of residents has low access to a supermarket or large grocery store. This indicator is relevant because it highlights populations and geographies facing food insecurity.

Report Area	Total Population	Population with Low Food Access	Percent Population with Low Food Access
Report Area	53,624	14,273	26.62%
Bureau County, IL	34,978	13,352	38.17%
Marshall County, IL	12,640	265	2.1%
Putnam County, IL	6,006	656	10.92%
Illinois	12,830,632	2,483,877	19.36%
United States	308,745,538	69,266,771	22.43%

Percent Population with Low Food Access



■ Report Area (26.62%)
■ Illinois (19.36%)
■ United States (22.43%)

Data Source: US Department of Agriculture, Economic Research Service, USDA - Food Access Research Atlas. 2015. Source geography: Tract

Food Access - Low Income Low Food Access

Report Area	Total Population	Low Income Population	Low Income Population with Low Food Access	Percent Low Income Population with Low Food Access
Report Area	53,624	15,375	4,070	26.47%
Bureau County, IL	34,978	9,860	3,856	39.11%
Marshall County, IL	12,640	3,704	82	2.21%
Putnam County, IL	6,006	1,811	132	7.29%
Illinois	12,830,632	4,120,709	605,035	14.68%
United States	308,745,538	106,758,543	20,221,368	18.94%

Percent Low Income Population with Low Food Access



■ Report Area (26.47%)
■ Illinois (14.68%)
■ United States (18.94%)

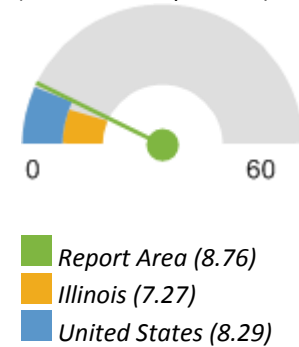
Data Source: US Department of Agriculture, Economic Research Service, USDA - Food Access Research Atlas. 2015. Source geography: Tract

Food Access - SNAP-Authorized Food Stores

This indicator reports the number of SNAP-authorized food stores as a rate per 10,000 population. SNAP-authorized stores include grocery stores as well as supercenters, specialty food stores, and convenience stores that are authorized to accept SNAP (Supplemental Nutrition Assistance Program) benefits.

Report Area	Total Population	Total SNAP-Authorized Retailers	SNAP-Authorized Retailers, Rate per 10,000 Population
Report Area	53,624	47	8.76
Bureau County, IL	34,978	27	7.72
Marshall County, IL	12,640	14	11.08
Putnam County, IL	6,006	6	9.99
Illinois	12,830,632	9,326	7.27
United States	312,411,142	258,959	8.29

SNAP-Authorized Retailers, Rate (Per 10,000 Population)



Data Source: US Department of Agriculture, Food and Nutrition Service, USDA - SNAP Retailer Locator. Additional data analysis by CARES. 2016. Source geography: Tract

Food Access - WIC-Authorized Food Stores

This indicator reports the number of food stores and other retail establishments per 100,000 population that are authorized to accept WIC Program (Special Supplemental Nutrition Program for Women, Infants, and Children) benefits and that carry designated WIC foods and food categories. This indicator is relevant because it provides a measure of food security and healthy food access for women and children in poverty as well as environmental influences on dietary behaviors.

Report Area	Total Population (2011 Estimate)	Number WIC-Authorized Food Stores	WIC-Authorized Food Store Rate (Per 100,000 Pop.)
Report Area	53,107	9	16.9
Bureau County, IL	34,606	5	14.4
Marshall County, IL	12,533	3	23.9
Putnam County, IL	5,968	1	16.8
Illinois	12,936,505	2,390	18.4
United States	318,921,538	50,042	15.6

WIC-Authorized Food Stores, Rate (Per 100,000 Population)



■ Report Area (16.9)
■ Illinois (18.4)
■ United States (15.6)

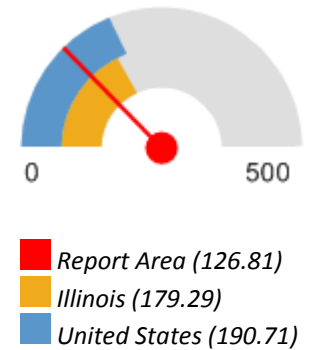
Data Source: US Department of Agriculture, Economic Research Service, USDA - Food Environment Atlas. 2011. Source geography: County

Housing - Mortgage Lending

Lending institutions must report all loans for home purchases, home improvements, and mortgage refinancing based on the Home Mortgage Disclosure Act (HMDA) of 1975. This indicator displays information derived from the 2014 HMDA loan-level data files.

Report Area	Total Population (2010)	Number of Home Loans Originated	Loans Originations, Approval Rate	Loan Originations, Rate per 100,000 Population
Report Area	53,624	680	55.42%	126.81
Bureau County, IL	34,978	441	57.5%	126.08
Marshall County, IL	12,640	187	51.94%	147.94
Putnam County, IL	6,006	52	52%	86.58
Illinois	12,830,632	230,034	53.57%	179.29
United States	312,470,869	5,959,108	51.57%	190.71

Home Loan Origination Rate



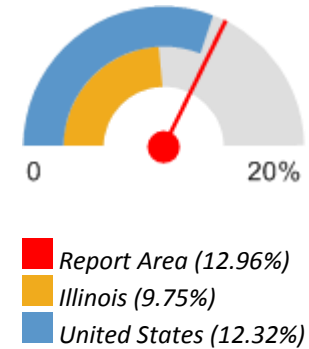
Data Source: Federal Financial Institutions Examination Council, Home Mortgage Disclosure Act. Additional data analysis by CARES. 2014.

Housing - Vacancy Rate

This indicator reports the number and percentage of housing units that are vacant. A housing unit is considered vacant by the American Community Survey if no one is living in it at the time of interview. Units occupied at the time of interview entirely by persons who are staying two months or less and who have a more permanent residence elsewhere are considered to be temporarily occupied, and are classified as “vacant.”

Report Area	Total Housing Units	Vacant Housing Units	Vacant Housing Units, Percent
Report Area	24,665	3,196	12.96%
Bureau County, IL	15,647	1,624	10.38%
Marshall County, IL	5,912	919	15.54%
Putnam County, IL	3,106	653	21.02%
Illinois	5,303,675	517,287	9.75%
United States	133,351,840	16,425,535	12.32%

Vacant Housing Units, Percent



Data Source: US Census Bureau, American Community Survey. 2011-15. Source geography: Tract

Liquor Store Access

This indicator reports the number of beer, wine, and liquor stores per 100,000 population, as defined by North American Industry Classification System (NAICS) Code 445310. This indicator is relevant because it provides a measure of healthy food access and environmental influences on dietary behaviors.

Report Area	Total Population	Number of Establishments	Establishments, Rate per 100,000 Population
Report Area	53,624	4	7.5
Bureau County, IL	34,978	3	8.58
Marshall County, IL	12,640	1	7.91
Putnam County, IL	6,006	0	0
Illinois	12,830,632	1,309	10.2
United States	312,732,537	33,204	10.6

Liquor Stores, Rate
(Per 100,000 Population)



■ Report Area (7.5)
■ Illinois (10.2)
■ United States (10.6)

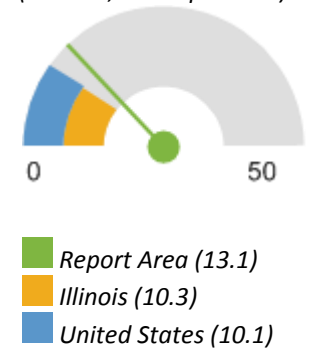
Data Source: US Census Bureau, County Business Patterns. Additional data analysis by CARES. 2014. Source geography: County

Recreation and Fitness Facility Access

This indicator reports the number per 100,000 population of recreation and fitness facilities as defined by North American Industry Classification System (NAICS) Code 713940. This indicator is relevant because access to recreation and fitness facilities encourages physical activity and other healthy behaviors.

Report Area	Total Population	Number of Establishments	Establishments, Rate per 100,000 Population
Report Area	53,624	7	13.1
Bureau County, IL	34,978	3	8.58
Marshall County, IL	12,640	2	15.82
Putnam County, IL	6,006	2	33.3
Illinois	12,830,632	1,325	10.3
United States	312,732,537	31,715	10.1

Recreation and Fitness Facilities, Rate (Per 100,000 Population)



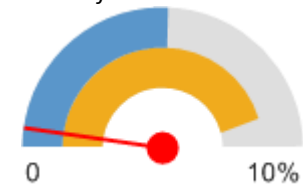
Data Source: US Census Bureau, County Business Patterns. Additional data analysis by CARES. 2014. Source geography: County

Use of Public Transportation

This indicator reports the percentage of population using public transportation as their primary means of commute to work. Public transportation includes buses or trolley buses, streetcars or trolley cars, subway or elevated rails, and ferryboats.

Report Area	Total Population Employed Age 16	Population Using Public Transit for Commute to Work	Percent Population Using Public Transit for Commute to Work
Report Area	24,275	112	0.46%
Bureau County, IL	15,988	112	0.7%
Marshall County, IL	5,550	0	0%
Putnam County, IL	2,737	0	0%
Illinois	5,983,836	544,295	9.1%
United States	143,621,171	7,362,038	5.13%

Percent Population Using Public Transit for Commute to Work



■ Report Area (0.46%)
■ Illinois (9.1%)
■ United States (5.13%)

Data Source: US Census Bureau, American Community Survey. 2011-15. Source geography: Tract

Access to Dentists

This indicator reports the number of dentists per 100,000 population. This indicator includes all dentists - qualified as having a doctorate in dental surgery (D.D.S.) or dental medicine (D.M.D.), who are licensed by the state to practice dentistry and who are practicing within the scope of that license.

Report Area	Total Population, 2015	Dentists, 2015	Dentists, Rate per 100,000 Pop.
Report Area	51,213	17	33.2
Bureau County, IL	33,587	11	32.75
Marshall County, IL	11,982	4	33.38
Putnam County, IL	5,644	2	35.44
Illinois	12,859,995	9,336	72.6
United States	321,418,820	210,832	65.6

Dentists, Rate per 100,000 Pop.



■ Report Area (33.2)
■ Illinois (72.6)
■ United States (65.6)

Data Source: US Department of Health Human Services, Health Resources and Services Administration, Area Health Resource File. 2015. Source geography: County

Access to Mental Health Providers

This indicator reports the rate of the county population to the number of mental health providers including psychiatrists, psychologists, clinical social workers, and counsellors that specialize in mental health care.

Report Area	Estimated Population	Number of Mental Health Providers	Ratio of Mental Health Providers to Population (1 Provider per x Persons)	Mental Health Care Provider Rate (Per 100,000 Population)
Report Area	33,838	21	1,611.3	62
Bureau County, IL	33,838	21	1,611.3	62
Marshall County, IL	0	0	no data	no data
Putnam County, IL	0	0	no data	no data
Illinois	12,806,917	23,090	554.7	180.2
United States	317,105,555	643,219	493	202.8

Mental Health Care Provider Rate (Per 100,000 Population)



■ Report Area (62)
■ Illinois (180.2)
■ United States (202.8)

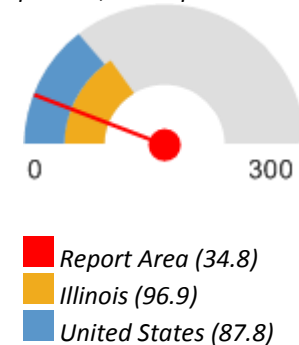
Data Source: University of Wisconsin Population Health Institute, County Health Rankings. 2016. Source geography: County

Access to Primary Care

This indicator reports the number of primary care physicians per 100,000 population. Doctors classified as "primary care physicians" by the AMA include: General Family Medicine MDs and DOs, General Practice MDs and DOs, General Internal Medicine MDs and General Pediatrics MDs. Physicians age 75 and over and physicians practicing sub-specialties within the listed specialties are excluded. This indicator is relevant because a shortage of health professionals contributes to access and health status issues.

Report Area	Total Population, 2014	Primary Care Physicians, 2014	Primary Care Physicians, Rate per 100,000 Pop.
Report Area	51,668	18	34.8
Bureau County, IL	33,840	17	50.24
Marshall County, IL	12,014	0	0
Putnam County, IL	5,814	1	17.2
Illinois	12,880,580	12,477	96.9
United States	318,857,056	279,871	87.8

Primary Care Physicians, Rate per 100,000 Pop.



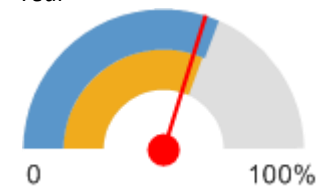
Data Source: US Department of Health Human Services, Health Resources and Services Administration, Area Health Resource File. 2014. Source geography: County

Cancer Screening - Mammogram

This indicator reports the percentage of female Medicare enrollees, age 67-69, who have received one or more mammograms in the past two years. This indicator is relevant because engaging in preventive behaviors allows for early detection and treatment of health problems. This indicator can also highlight a lack of access to preventive care, a lack of health knowledge, insufficient provider outreach, and/or social barriers preventing utilization of services.

Report Area	Total Medicare Enrollees	Female Medicare Enrollees Age 67-69	Female Medicare Enrollees with Mammogram in Past 2 Years	Percent Female Medicare Enrollees with Mammogram in Past 2 Year
Report Area	8,209	690	412	59.9%
Bureau County, IL	5,383	442	250	56.8%
Marshall County, IL	1,959	167	106	63.5%
Putnam County, IL	867	81	55	69.1%
Illinois	316,321	26,965	16,987	63%
United States	26,753,396	2,395,946	1,510,847	63.1%

Percent Female Medicare Enrollees with Mammogram in Past 2 Year



■ Report Area (59.9%)
■ Illinois (63%)
■ United States (63.1%)

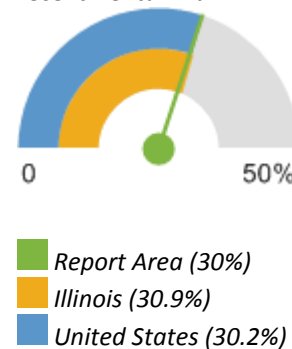
Data Source: Dartmouth College Institute for Health Policy Clinical Practice, Dartmouth Atlas of Health Care. 2014. Source geography: County

Dental Care Utilization

This indicator reports the percentage of adults aged 18 and older who self-report that they have not visited a dentist, dental hygienist or dental clinic within the past year. This indicator is relevant because engaging in preventive behaviors decreases the likelihood of developing future health problems. This indicator can also highlight a lack of access to preventive care, a lack of health knowledge, insufficient provider outreach, and/or social barriers preventing utilization of services.

Report Area	Total Population (Age 18)	Total Adults Without Recent Dental Exam	Percent Adults with No Dental Exam
Report Area	41,480	12,442	30%
Bureau County, IL	26,898	12,442	46.3%
Marshall County, IL	9,910	0	0%
Putnam County, IL	4,672	0	0%
Illinois	9,654,603	2,981,670	30.9%
United States	235,375,690	70,965,788	30.2%

Percent Adults Without Recent Dental Exam



*Data Source: Centers for Disease Control and Prevention, Behavioral Risk Factor Surveillance System. Additional data analysis by CARES. 2006-10.
Source geography: County*

Diabetes Management - Hemoglobin A1c Test

This indicator reports the percentage of diabetic Medicare patients who have had a hemoglobin A1c (hA1c) test, a blood test which measures blood sugar levels, administered by a health care professional in the past year. In the report area, 782 Medicare enrollees with diabetes have had an annual exam out of 946 Medicare enrollees in the report area with diabetes, or 82.7%. This indicator is relevant because engaging in preventive behaviors allows for early detection and treatment of health problems. This indicator can also highlight a lack of access to preventive care, a lack of health knowledge, insufficient provider outreach, and/or social barriers preventing utilization of services.

Report Area	Total Medicare Enrollees	Medicare Enrollees with Diabetes	Medicare Enrollees with Diabetes with Annual Exam	Percent Medicare Enrollees with Diabetes with Annual Exam
Report Area	8,209	946	782	82.7%
Bureau County, IL	5,383	604	498	82.6%
Marshall County, IL	1,959	235	203	86.4%
Putnam County, IL	867	107	79	74.8%
Illinois	316,321	36,855	31,820	86.3%
United States	26,753,396	3,314,834	2,822,996	85.2%

Percent Medicare Enrollees with Diabetes with Annual Exam



■ Report Area (82.7%)
■ Illinois (86.3%)
■ United States (85.2%)

Data Source: Dartmouth College Institute for Health Policy Clinical Practice, Dartmouth Atlas of Health Care. 2014. Source geography: County

Federally Qualified Health Centers

This indicator reports the number of Federally Qualified Health Centers (FQHCs) in the community. This indicator is relevant because FQHCs are community assets that provide health care to vulnerable populations; they receive extra funding from the federal government to promote access to ambulatory care in areas designated as medically underserved.

<i>Report Area</i>	<i>Total Population</i>	<i>Number of Federally Qualified Health Centers</i>	<i>Rate of Federally Qualified Health Centers per 100,000 Population</i>
<i>Report Area</i>	<i>53,624</i>	<i>0</i>	<i>0</i>
<i>Bureau County, IL</i>	<i>34,978</i>	<i>0</i>	<i>0</i>
<i>Marshall County, IL</i>	<i>12,640</i>	<i>0</i>	<i>0</i>
<i>Putnam County, IL</i>	<i>6,006</i>	<i>0</i>	<i>0</i>
<i>Illinois</i>	<i>12,830,632</i>	<i>325</i>	<i>2.53</i>
<i>United States</i>	<i>312,471,327</i>	<i>7,293</i>	<i>2.33</i>

Note: This indicator is compared with the state average.

Data Source: US Department of Health Human Services, Center for Medicare Medicaid Services, Provider of Services File. Jun. 2016. Source geography: Address

HIV Screenings

This indicator reports the percentage of adults age 18-70 who self-report that they have never been screened for HIV. This indicator is relevant because engaging in preventive behaviors allows for early detection and treatment of health problems. This indicator can also highlight a lack of access to preventive care, a lack of health knowledge, insufficient provider outreach, and/or social barriers preventing utilization of services.

Report Area	Survey Population (Smokers Age 18)	Total Adults Never Screened for HIV / AIDS	Percent Adults Never Screened for HIV / AIDS
Report Area	26,658	23,457	88%
Bureau County, IL	26,658	23,457	87.99%
Marshall County, IL	no data	no data	no data
Putnam County, IL	no data	no data	no data
Illinois	9,215,764	6,345,570	68.86%
United States	214,984,421	134,999,025	62.79%

Percent Adults Never Screened for HIV / AIDS



■ Report Area (88%)
■ Illinois (68.86%)
■ United States (62.79%)

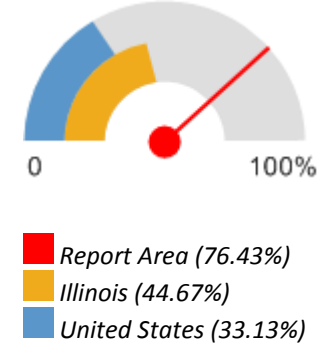
Data Source: Centers for Disease Control and Prevention, Behavioral Risk Factor Surveillance System. Additional data analysis by CARES. 2011-12. Source geography: County

Population Living in a Health Professional Shortage Area

This indicator reports the percentage of the population that is living in a geographic area designated as a "Health Professional Shortage Area" (HPSA), defined as having a shortage of primary medical care, dental or mental health professionals. This indicator is relevant because a shortage of health professionals contributes to access and health status issues.

Report Area	Total Area Population	Population Living in a HPSA	Percentage of Population Living in a HPSA
Report Area	53,624	40,984	76.43%
Bureau County, IL	34,978	34,978	100%
Marshall County, IL	12,640	0	0%
Putnam County, IL	6,006	6,006	100%
Illinois	12,830,632	5,731,457	44.67%
United States	308,745,538	102,289,607	33.13%

Percentage of Population Living in a HPSA



Data Source: US Department of Health Human Services, Health Resources and Services Administration, Health Resources and Services Administration. April 2016. Source geography: HPSA

Lack of Prenatal Care

This indicator reports the percentage of women who do not obtain prenatal care during their first trimester of pregnancy. This indicator is relevant because engaging in prenatal care decreases the likelihood of maternal and infant health risks. This indicator can also highlight a lack of access to preventive care, a lack of health knowledge, insufficient provider outreach, and/or social barriers preventing utilization of services.

Report Area	Total Births	Mothers Starting Prenatal Care in First Semester	Mothers with Late or No Prenatal Care	Prenatal Care Not Reported	Percentage Mothers with Late or No Prenatal Care
Report Area	no data	no data	no data	no data	no data
Bureau County, IL	no data	no data	no data	no data	suppressed
Marshall County, IL	no data	no data	no data	no data	suppressed
Putnam County, IL	no data	no data	no data	no data	suppressed
Illinois	693,994	119,027	37,372	537,595	5.4%
United States	16,693,978	7,349,554	2,880,098	6,464,326	17.3%

Percentage Mothers with Late or No Prenatal Care



■ Illinois (5.4%)
■ United States (17.3%)

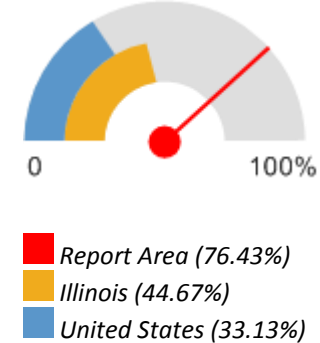
Data Source: Centers for Disease Control and Prevention, National Vital Statistics System. Accessed via CDC WONDER. Centers for Disease Control and Prevention, Wide-Ranging Online Data for Epidemiologic Research. 2007-10. Source geography: County

Population Living in a Health Professional Shortage Area

This indicator reports the percentage of the population that is living in a geographic area designated as a "Health Professional Shortage Area" (HPSA), defined as having a shortage of primary medical care, dental or mental health professionals. This indicator is relevant because a shortage of health professionals contributes to access and health status issues.

Report Area	Total Area Population	Population Living in a HPSA	Percentage of Population Living in a HPSA
Report Area	53,624	40,984	76.43%
Bureau County, IL	34,978	34,978	100%
Marshall County, IL	12,640	0	0%
Putnam County, IL	6,006	6,006	100%
Illinois	12,830,632	5,731,457	44.67%
United States	308,745,538	102,289,607	33.13%

Percentage of Population Living in a HPSA



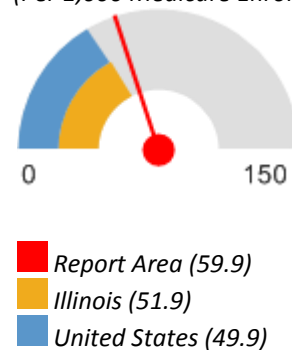
Data Source: US Department of Health Human Services, Health Resources and Services Administration, Health Resources and Services Administration. April 2016. Source geography: HPSA

Preventable Hospital Events

This indicator reports the discharge rate (per 1,000 Medicare enrollees) for conditions that are ambulatory care sensitive (ACS). ACS conditions include pneumonia, dehydration, asthma, diabetes, and other conditions which could have been prevented if adequate primary care resources were available and accessed by those patients. This indicator is relevant because analysis of ACS discharges allows demonstrating a possible “return on investment” from interventions that reduce admissions (for example, for uninsured or Medicaid patients) through better access to primary care resources.

Report Area	Total Medicare Part A Enrollees	Ambulatory Care Sensitive Condition Hospital Discharges	Ambulatory Care Sensitive Condition Discharge Rate
Report Area	8,494	508	59.9
Bureau County, IL	5,571	339	60.9
Marshall County, IL	2,035	118	58.3
Putnam County, IL	888	50	57.3
Illinois	341,565	17,732	51.9
United States	29,649,023	1,479,545	49.9

Preventable Hospital Events, Age-Adjusted Discharge Rate (Per 1,000 Medicare Enrollees)



Data Source: Dartmouth College Institute for Health Policy Clinical Practice, Dartmouth Atlas of Health Care. 2014. Source geography: County

Alcohol Consumption

This indicator reports the percentage of adults aged 18 and older who self-report heavy alcohol consumption (defined as more than two drinks per day on average for men and one drink per day on average for women). This indicator is relevant because current behaviors are determinants of future health and this indicator may illustrate a cause of significant health issues, such as cirrhosis, cancers, and untreated mental and behavioral health needs.

Report Area	Total Population Age 18	Estimated Adults Drinking Excessively	Estimated Adults Drinking Excessively (Crude Percentage)	Estimated Adults Drinking Excessively (Age-Adjusted Percentage)
Report Area	41,438	6,069	22.6%	28.8%
Bureau County, IL	26,853	6,069	22.6%	25.4%
Marshall County, IL	9,914	no data	suppressed	37.9%
Putnam County, IL	4,671	no data	suppressed	suppressed
Illinois	9,654,603	1,930,921	20%	20.4%
United States	232,556,016	38,248,349	16.4%	16.9%

Estimated Adults Drinking Excessively (Age-Adjusted Percentage)



■ Report Area (28.8%)
■ Illinois (20.4%)
■ United States (16.9%)

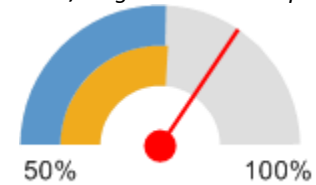
Data Source: Centers for Disease Control and Prevention, Behavioral Risk Factor Surveillance System. Accessed via the Health Indicators Warehouse. US Department of Health Human Services, Health Indicators Warehouse. 2006-12. Source geography: County

Fruit/Vegetable Consumption

In the report area an estimated 22,446, or 84.4% of adults over the age of 18 are consuming less than 5 servings of fruits and vegetables each day. This indicator is relevant because current behaviors are determinants of future health, and because unhealthy eating habits may cause of significant health issues, such as obesity and diabetes.

<i>Report Area</i>	<i>Total Population (Age 18)</i>	<i>Total Adults with Inadequate Fruit / Vegetable Consumption</i>	<i>Percent Adults with Inadequate Fruit / Vegetable Consumption</i>
<i>Report Area</i>	<i>41,145</i>	<i>22,446</i>	<i>84.4%</i>
<i>Bureau County, IL</i>	<i>26,595</i>	<i>22,446</i>	<i>84.4%</i>
<i>Marshall County, IL</i>	<i>9,920</i>	<i>no data</i>	<i>suppressed</i>
<i>Putnam County, IL</i>	<i>4,630</i>	<i>no data</i>	<i>suppressed</i>
<i>Illinois</i>	<i>9,591,923</i>	<i>7,318,637</i>	<i>76.3%</i>
<i>United States</i>	<i>227,279,010</i>	<i>171,972,118</i>	<i>75.7%</i>

Percent Adults with Inadequate Fruit / Vegetable Consumption



■ Report Area (84.4%)
■ Illinois (76.3%)
■ United States (75.7%)

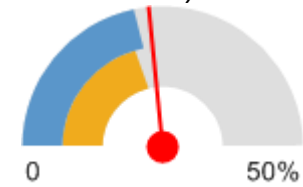
Data Source: Centers for Disease Control and Prevention, Behavioral Risk Factor Surveillance System. Accessed via the Health Indicators Warehouse. US Department of Health Human Services, Health Indicators Warehouse. 2005-09. Source geography: County

Physical Inactivity

Within the report area, 10,120 or 23.4% of adults aged 20 and older self-report no leisure time for activity, based on the question: "During the past month, other than your regular job, did you participate in any physical activities or exercises such as running, calisthenics, golf, gardening, or walking for exercise?". This indicator is relevant because current behaviors are determinants of future health and this indicator may illustrate a cause of significant health issues, such as obesity and poor cardiovascular health.

Report Area	Total Population Age 20	Population with no Leisure Time Physical Activity	Percent Population with no Leisure Time Physical Activity
Report Area	39,700	10,120	23.4%
Bureau County, IL	25,820	6,894	24.7%
Marshall County, IL	9,356	2,208	21.4%
Putnam County, IL	4,524	1,018	20.6%
Illinois	9,516,375	2,020,399	20.8%
United States	234,207,619	52,147,893	21.8%

Percent Population with no Leisure Time Physical Activity



■ Report Area (23.4%)
■ Illinois (20.8%)
■ United States (21.8%)

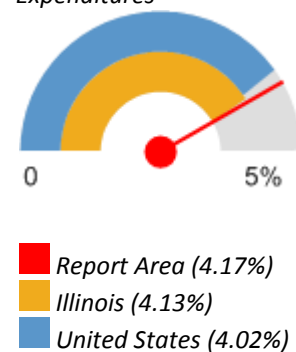
Data Source: Centers for Disease Control and Prevention, National Center for Chronic Disease Prevention and Health Promotion. 2013. Source geography: County

Soda Expenditures

This indicator reports soft drink consumption by census tract by estimating expenditures for carbonated beverages, as a percentage of total food-at-home expenditures. This indicator is relevant because current behaviors are determinants of future health and this indicator may illustrate a cause of significant health issues such as diabetes and obesity. Expenditures data are suppressed for single counties and single-geography custom areas. Rank data are not available custom report areas or multi-county areas.

Report Area	State Rank	Z-Score (US)	Z-Score (State)	Average Expenditures (USD)	Percentage of Food-At-Home Expenditures
Report Area	suppressed	0.41	0.17	\$240.51	4.17%
Bureau County, IL	8	0.03	-0.47	suppressed	suppressed
Marshall County, IL	78	1.73	2.36	suppressed	suppressed
Putnam County, IL	9	0.11	-0.33	suppressed	suppressed
Illinois	no data	0.13	0	\$243.81	4.13%
United States	no data	no data	no data	\$236.04	4.02%

Soda Expenditures, Percentage of Total Food-At-Home Expenditures



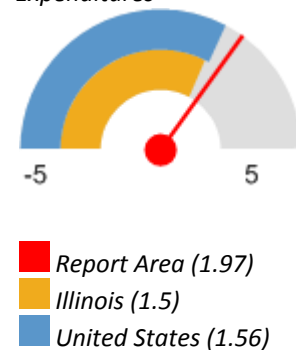
Data Source: Nielsen, Nielsen SiteReports. 2014. Source geography: Tract

Tobacco Expenditures

This indicator reports estimated expenditures for cigarettes, as a percentage of total household expenditures. This indicator is relevant because tobacco use is linked to leading causes of death such as cancer and cardiovascular disease. Expenditures data are suppressed for single counties and single-geography custom areas. Rank data are not available custom report areas or multi-county areas. Expenditures data are suppressed for single counties and single-geography custom areas. Rank data are not available custom report areas or multi-county areas.

Report Area	State Rank	Z-Score (US)	Z-Score (State)	Average Expenditures (USD)	Percentage of Food-At-Home Expenditures
Report Area	suppressed	1.04	1.72	\$996.11	1.97%
Bureau County, IL	29	0.93	1.57	suppressed	suppressed
Marshall County, IL	46	1.24	2.01	suppressed	suppressed
Putnam County, IL	42	1.21	1.97	suppressed	suppressed
Illinois	no data	-0.35	0	\$807.79	1.5%
United States	no data	no data	no data	\$822.7	1.56%

Cigarette Expenditures, Percentage of Total Household Expenditures



Data Source: Nielsen, Nielsen SiteReports. 2014. Source geography: Tract

Tobacco Usage - Former or Current Smokers

In the report area, an estimated 16,447 adults, or 59.32%, report ever smoking 100 or more cigarettes. This indicator is relevant because tobacco use is linked to leading causes of death such as cancer and cardiovascular disease.

Report Area	Survey Population (Adults Age 18)	Total Adults Ever Smoking 100 or More Cigarettes	Percent Adults Ever Smoking 100 or More Cigarettes
Report Area	27,728	16,447	59.32%
Bureau County, IL	27,728	16,447	59.31%
Marshall County, IL	no data	no data	no data
Putnam County, IL	no data	no data	no data
Illinois	9,659,812	4,258,470	44.08%
United States	235,151,778	103,842,020	44.16%

Percent Adults Ever Smoking 100 or More Cigarettes



■ Report Area (59.32%)
■ Illinois (44.08%)
■ United States (44.16%)

Data Source: Centers for Disease Control and Prevention, Behavioral Risk Factor Surveillance System. Additional data analysis by CARES. 2011-12. Source geography: County

Tobacco Usage - Quit Attempt

An estimated 43.75% of adult smokers in the report area attempted to quit smoking for at least 1 day in the past year. This indicator is relevant because tobacco use is linked to leading causes of death such as cancer and cardiovascular disease and supporting efforts to quit smoking may increase positive health outcomes.

Report Area	Survey Population (Smokers Age 18)	Total Smokers with Quit Attempt in Past 12 Months	Percent Smokers with Quit Attempt in Past 12 Months
Report Area	10,255	4,487	43.75%
Bureau County, IL	10,255	4,487	43.75%
Marshall County, IL	no data	no data	no data
Putnam County, IL	no data	no data	no data
Illinois	1,903,115	1,164,973	61.21%
United States	45,526,654	27,323,073	60.02%

Percent Smokers with Quit Attempt in Past 12 Months



■ Report Area (43.75%)
■ Illinois (61.21%)
■ United States (60.02%)

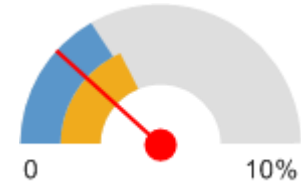
Data Source: Centers for Disease Control and Prevention, Behavioral Risk Factor Surveillance System. Additional data analysis by CARES. 2011-12.
Source geography: County

Walking or Biking to Work

This indicator reports the percentage of the population that commutes to work by either walking or riding a bicycle.

Report Area	Population Age 16	Population Walking or Biking to Work	Percentage Walking or Biking to Work
Report Area	24,275	562	2.32%
Bureau County, IL	15,988	340	2.13%
Marshall County, IL	5,550	173	3.12%
Putnam County, IL	2,737	49	1.79%
Illinois	5,983,836	222,384	3.72%
United States	143,621,171	4,858,991	3.38%

Percentage Walking or Biking to Work



■ Report Area (2.32%)
■ Illinois (3.72%)
■ United States (3.38%)

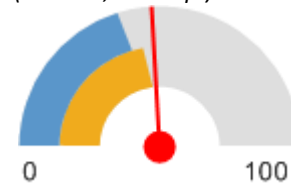
Data Source: US Census Bureau, American Community Survey. 2011-15. Source geography: Tract

Cancer Incidence - Colon and Rectum

This indicator reports the age adjusted incidence rate (cases per 100,000 population per year) of colon and rectum cancer adjusted to 2000 U.S. standard population age groups (Under age 1, 1-4, 5-9, ..., 80-84, 85 and older). This indicator is relevant because cancer is a leading cause of death and it is important to identify cancers separately to better target interventions.

Report Area	Estimated Total Population	New Cases (Annual Average)	Cancer Incidence Rate (Per 100,000 Pop.)
Report Area	7,457	36	48.27
Bureau County, IL	4,612	22	47.7
Marshall County, IL	1,871	9	48.1
Putnam County, IL	974	5	51.3
Illinois	1,382,781	6,264	45.3
United States	33,989,067	137,973	40.59
HP 2020 Target			<= 38.7

Annual Colon and Rectum Cancer Incidence Rate (Per 100,000 Pop.)



■ Report Area (48.27)
■ Illinois (45.3)
■ United States (40.59)

Data Source: State Cancer Profiles. 2009-13. Source geography: County

Cancer Incidence - Lung

This indicator reports the age adjusted incidence rate (cases per 100,000 population per year) of colon and rectum cancer adjusted to 2000 U.S. standard population age groups (Under age 1, 1-4, 5-9, ..., 80-84, 85 and older). This indicator is relevant because cancer is a leading cause of death and it is important to identify cancers separately to better target interventions.

Report Area	Estimated Total Population	New Cases (Annual Average)	Cancer Incidence Rate (Per 100,000 Pop.)
Report Area	7,888	53	67.18
Bureau County, IL	4,885	34	69.6
Marshall County, IL	2,051	12	58.5
Putnam County, IL	952	7	73.5
Illinois	1,370,544	9,306	67.9
United States	33,999,704	212,905	62.62

Annual Lung Cancer Incidence Rate
(Per 100,000 Pop.)



■ Report Area (67.18)
■ Illinois (67.9)
■ United States (62.62)

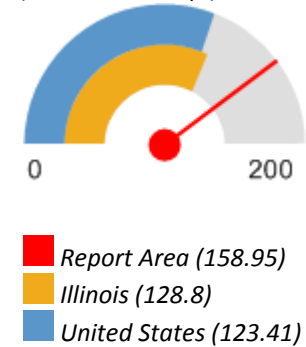
Data Source: State Cancer Profiles. 2009-13. Source geography: County

Cancer Incidence - Prostate

This indicator reports the age adjusted incidence rate (cases per 100,000 population per year) of males with prostate cancer adjusted to 2000 U.S. standard population age groups (Under age 1, 1-4, 5-9, ..., 80-84, 85 and older). This indicator is relevant because cancer is a leading cause of death and it is important to identify cancers separately to better target interventions.

Report Area	Estimated Total Population (Male)	New Cases (Annual Average)	Cancer Incidence Rate (Per 100,000 Pop.)
Report Area	3,648	58	158.95
Bureau County, IL	2,296	35	152.4
Marshall County, IL	911	16	175.6
Putnam County, IL	441	7	158.7
Illinois	650,000	8,372	128.8
United States	16,301,685	201,179	123.41

Annual Prostate Cancer Incidence Rate (Per 100,000 Pop.)



Data Source: State Cancer Profiles. 2009-13. Source geography: County

Depression (Medicare Population)

This indicator reports the percentage of the Medicare fee-for-service population with depression.

Report Area	Total Medicare Beneficiaries	Beneficiaries with Depression	Percent with Depression
Report Area	9,496	1,172	12.3%
Bureau County, IL	6,255	750	12%
Marshall County, IL	2,140	304	14.2%
Putnam County, IL	1,101	118	10.7%
Illinois	1,476,750	219,269	14.8%
United States	34,096,898	5,537,063	16.2%

Percentage of Medicare Beneficiaries with Depression



■ Report Area (12.3%)
■ Illinois (14.8%)
■ United States (16.2%)

Data Source: Centers for Medicare and Medicaid Services. 2014. Source geography: County

Diabetes (Adult)

This indicator reports the percentage of adults aged 20 and older who have ever been told by a doctor that they have diabetes. This indicator is relevant because diabetes is a prevalent problem in the U.S.; it may indicate an unhealthy lifestyle and puts individuals at risk for further health issues.

Report Area	Total Population Age 20	Population with Diagnosed Diabetes	Population with Diagnosed Diabetes, Crude Rate	Population with Diagnosed Diabetes, Age-Adjusted Rate
Report Area	39,773	4,449	11.19	8.9%
Bureau County, IL	25,920	2,929	11.3	9.1%
Marshall County, IL	9,339	1,046	11.2	8.7%
Putnam County, IL	4,514	474	10.5	8.2%
Illinois	9,507,158	864,658	9.09	8.47%
United States	236,919,508	23,685,417	10	9.19%

Percent Adults with Diagnosed Diabetes (Age-Adjusted)



■ Report Area (8.9%)
■ Illinois (8.47%)
■ United States (9.19%)

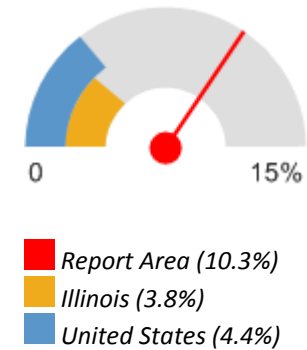
Data Source: Centers for Disease Control and Prevention, National Center for Chronic Disease Prevention and Health Promotion. 2013. Source geography: County

Heart Disease (Adult)

2,851, or 10.3% of adults aged 18 and older have ever been told by a doctor that they have coronary heart disease or angina. This indicator is relevant because coronary heart disease is a leading cause of death in the U.S. and is also related to high blood pressure, high cholesterol, and heart attacks.

Report Area	Survey Population (Adults Age 18)	Total Adults with Heart Disease	Percent Adults with Heart Disease
Report Area	27,728	2,851	10.3%
Bureau County, IL	27,728	2,851	10.3%
Marshall County, IL	no data	no data	no data
Putnam County, IL	no data	no data	no data
Illinois	9,681,141	369,926	3.8%
United States	236,406,904	10,407,185	4.4%

Percent Adults with Heart Disease



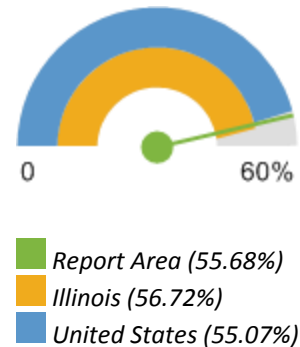
Data Source: Centers for Disease Control and Prevention, Behavioral Risk Factor Surveillance System. Additional data analysis by CARES. 2011-12. Source geography: County

High Blood Pressure (Medicare Population)

This indicator reports the percentage of the Medicare fee-for-service population with hypertension (high blood pressure).

Report Area	Total Medicare Beneficiaries	Beneficiaries with High Blood Pressure	Percent with High Blood Pressure
Report Area	9,496	5,287	55.68%
Bureau County, IL	6,255	3,394	54.26%
Marshall County, IL	2,140	1,279	59.77%
Putnam County, IL	1,101	614	55.77%
Illinois	1,476,750	837,638	56.72%
United States	34,096,898	18,775,968	55.07%

Percentage of Medicare Beneficiaries with High Blood Pressure



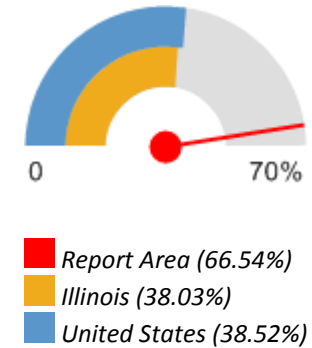
Data Source: Centers for Medicare and Medicaid Services. 2014. Source geography: County

High Cholesterol (Adult)

This indicator reports the percentage of adults aged 18 and older who self-report that they have ever been told by a doctor, nurse, or other health professional that they had high blood cholesterol.

Report Area	Survey Population (Adults Age 18)	Total Adults with High Cholesterol	Percent Adults with High Cholesterol
Report Area	18,512	12,318	66.54%
Bureau County, IL	18,512	12,318	66.54%
Marshall County, IL	no data	no data	no data
Putnam County, IL	no data	no data	no data
Illinois	7,348,647	2,794,348	38.03%
United States	180,861,326	69,662,357	38.52%

Percent Adults with High Cholesterol



Data Source: Centers for Disease Control and Prevention, Behavioral Risk Factor Surveillance System. Additional data analysis by CARES. 2011-12. Source geography: County

High Cholesterol (Medicare Population)

This indicator reports the percentage of the Medicare fee-for-service population with hyperlipidemia, which is typically associated with high cholesterol.

Report Area	Total Medicare Beneficiaries	Beneficiaries with High Cholesterol	Percent with High Cholesterol
Report Area	9,496	4,226	44.5%
Bureau County, IL	6,255	2,640	42.21%
Marshall County, IL	2,140	1,069	49.95%
Putnam County, IL	1,101	517	46.96%
Illinois	1,476,750	683,645	46.29%
United States	34,096,898	15,234,051	44.68%

Percentage of Medicare Beneficiaries with High Cholesterol



■ Report Area (44.5%)
■ Illinois (46.29%)
■ United States (44.68%)

Data Source: Centers for Medicare and Medicaid Services. 2014. Source geography: County

Infant Mortality

This indicator reports the rate of deaths to infants less than one year of age per 1,000 births. This indicator is relevant because high rates of infant mortality indicate the existence of broader issues pertaining to access to care and maternal and child health.

Report Area	Total Births	Total Infant Deaths	Infant Mortality Rate (Per 1,000 Births)
Report Area	2,995	15	5
Bureau County, IL	2,005	11	5.7
Marshall County, IL	715	4	6
Putnam County, IL	275	0	0
Illinois	879,035	6,065	6.9
United States	20,913,535	136,369	6.5
<u>HP 2020 Target</u>			<= 6.0

Infant Mortality Rate (Per 1,000 Births)



■ Report Area (5)
■ Illinois (6.9)
■ United States (6.5)

Data Source: US Department of Health Human Services, Health Resources and Services Administration, Area Health Resource File. 2006-10. Source geography: County

Low Birth Weight

This indicator reports the percentage of total births that are low birth weight (Under 2500g). This indicator is relevant because low birth weight infants are at high risk for health problems. This indicator can also highlight the existence of health disparities.

Report Area	Total Live Births	Low Weight Births (Under 2500g)	Low Weight Births, Percent of Total
Report Area	4,242	263	6.2%
Bureau County, IL	2,856	160	5.6%
Marshall County, IL	980	77	7.9%
Putnam County, IL	406	26	6.5%
Illinois	1,251,656	105,139	8.4%
United States	29,300,495	2,402,641	8.2%
<u>HP 2020 Target</u>			<= 7.8%

Percent Low Birth Weight Births



■ Report Area (6.2%)
■ Illinois (8.4%)
■ United States (8.2%)

Data Source: US Department of Health Human Services, Health Indicators Warehouse. Centers for Disease Control and Prevention, National Vital Statistics System. Accessed via CDC WONDER. 2006-12. Source geography: County

Mortality - Cancer

This indicator reports the rate of death due to malignant neoplasm (cancer) per 100,000 population. Figures are reported as crude rates, and as rates age-adjusted to year 2000 standard. Rates are resummarized for report areas from county level data, only where data is available. This indicator is relevant because cancer is a leading cause of death in the United States.

Report Area	Total Population	Average Annual Deaths, 2010-2014	Crude Death Rate (Per 100,000 Pop.)	Age-Adjusted Death Rate (Per 100,000 Pop.)
Report Area	52,590	133	252.5	169.2
Bureau County, IL	34,362	83	241.55	164.9
Marshall County, IL	12,333	34	277.3	173.7
Putnam County, IL	5,895	16	264.63	185
Illinois	12,867,528	24,326	189.05	173.9
United States	313,836,267	581,919	185.42	166.3
<u>HP 2020 Target</u>				<= 160.6

Cancer Mortality, Age-Adjusted Death Rate (Per 100,000 Pop.)



■ Report Area (169.2)
■ Illinois (173.9)
■ United States (166.3)

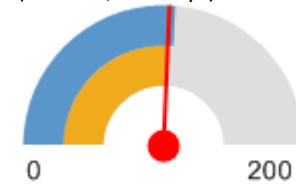
Data Source: Centers for Disease Control and Prevention, National Vital Statistics System. Accessed via CDC WONDER. 2010-14. Source geography: County

Mortality - Coronary Heart Disease

Within the report area the rate of death due to coronary heart disease per 100,000 population is 102.9. This rate is less than the Healthy People 2020 target of less than or equal to 103.4. Figures are reported as crude rates, and as rates age-adjusted to year 2000 standard. Rates are resummarized for report areas from county level data, only where data is available. This indicator is relevant because heart disease is a leading cause of death in the United States.

Report Area	Total Population	Average Annual Deaths, 2010-2014	Crude Death Rate (Per 100,000 Pop.)	Age-Adjusted Death Rate (Per 100,000 Pop.)
Report Area	52,590	86	163.1	102.9
Bureau County, IL	34,362	57	166.46	106.1
Marshall County, IL	12,333	22	176.76	105.6
Putnam County, IL	5,895	7	115.35	78.7
Illinois	12,867,528	14,592	113.4	102.3
United States	313,836,267	372,125	118.57	105.7
<u>HP 2020 Target</u>				<= 103.4

Coronary Heart Disease Mortality, Age-Adjusted Death Rate (Per 100,000 Pop.)



Report Area (102.9)
Illinois (102.3)
United States (105.7)

Data Source: Centers for Disease Control and Prevention, National Vital Statistics System. Accessed via CDC WONDER. 2010-14. Source geography: County

Mortality - Drug Poisoning

This indicator reports the rate of death due to drug overdose per 100,000 population. Figures are reported as crude rates, and as rates age-adjusted to year 2000 standard. Rates are resummairized for report areas from county level data, only where data is available. This indicator is relevant because suicide is an indicator of poor mental health.

Report Area	Total Population	Average Annual Deaths, 2010-2014	Crude Death Rate (Per 100,000 Pop.)	Age-Adjusted Death Rate (Per 100,000 Pop.)
Report Area	52,590	4	11.6	12.3
Bureau County, IL	34,362	4	11.64	12.3
Marshall County, IL	12,333	0	no data	no data
Putnam County, IL	5,895	0	no data	no data
Illinois	12,867,528	1,522	11.83	11.7
United States	313,836,267	42,432	13.52	13.4
<u>HP 2020 Target</u>				<= 10.2

Overdose Death, Age-Adjusted Death Rate (Per 100,000 Pop.)



■ Report Area (12.3)
■ Illinois (11.7)
■ United States (13.4)

Data Source: Centers for Disease Control and Prevention, National Vital Statistics System. Accessed via CDC WONDER. 2010-14. Source geography: County

Mortality - Heart Disease

Within the report area the rate of death due to coronary heart disease per 100,000 population is 188.3. Figures are reported as crude rates, and as rates age-adjusted to year 2000 standard. Rates are resummarized for report areas from county level data, only where data is available. This indicator is relevant because heart disease is a leading cause of death in the United States.

Report Area	Total Population	Average Annual Deaths, 2010-2014	Crude Death Rate (Per 100,000 Pop.)	Age-Adjusted Death Rate (Per 100,000 Pop.)
Report Area	52,590	158	301.2	188.3
Bureau County, IL	34,362	102	296.26	185.8
Marshall County, IL	12,333	43	347.03	210.3
Putnam County, IL	5,895	14	234.1	157.1
Illinois	12,867,528	24,895	193.47	174.5
United States	313,836,267	603,698	192.36	171.8

Heart Disease Mortality, Age-Adjusted Death Rate (Per 100,000 Pop.)



■ Report Area (188.3)
■ Illinois (174.5)
■ United States (171.8)

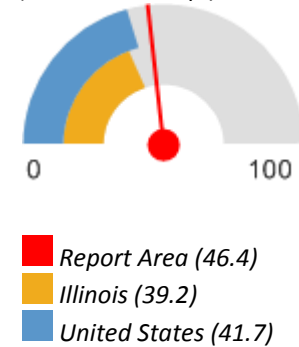
Data Source: Centers for Disease Control and Prevention, National Vital Statistics System. Accessed via CDC WONDER. 2010-14. Source geography: County

Mortality - Lung Disease

This indicator reports the rate of death due to chronic lower respiratory disease per 100,000 population. Figures are reported as crude rates, and as rates age-adjusted to year 2000 standard. Rates are resummarized for report areas from county level data, only where data is available. This indicator is relevant because lung disease is a leading cause of death in the United States.

Report Area	Total Population	Average Annual Deaths, 2007-2011	Crude Death Rate (Per 100,000 Pop.)	Age-Adjusted Death Rate (Per 100,000 Pop.)
Report Area	52,590	34	73.7	46.4
Bureau County, IL	34,362	25	71.59	45.3
Marshall County, IL	12,333	10	79.46	49.5
Putnam County, IL	5,895	0	no data	no data
Illinois	12,867,528	5,419	42.12	39.2
United States	313,836,267	144,125	45.92	41.7

Lung Disease Mortality, Age-Adjusted Death Rate (Per 100,000 Pop.)



Data Source: Centers for Disease Control and Prevention, National Vital Statistics System. Accessed via CDC WONDER. 2010-14. Source geography: County

Mortality - Motor Vehicle Crash

This indicator reports the rate of death due to motor vehicle crashes per 100,000 population, which include collisions with another motor vehicle, a nonmotorist, a fixed object, and a non-fixed object, an overturn, and any other non-collision. This indicator is relevant because motor vehicle crash deaths are preventable and they are a cause of premature death.

Report Area	Total Population	Average Annual Deaths, 2010-2014	Crude Death Rate (Per 100,000 Pop.)	Age-Adjusted Death Rate (Per 100,000 Pop.)
Report Area	52,590	4	11.6	11.8
Bureau County, IL	34,362	4	11.64	11.8
Marshall County, IL	12,333	0	no data	no data
Putnam County, IL	5,895	0	no data	no data
Illinois	12,867,528	1,028	7.99	7.8
United States	313,836,267	33,977	10.83	10.6

Motor Vehicle Crash Death, Age-Adjusted Death Rate (Per 100,000 Pop.)



■ Report Area (11.8)
■ Illinois (7.8)
■ United States (10.6)

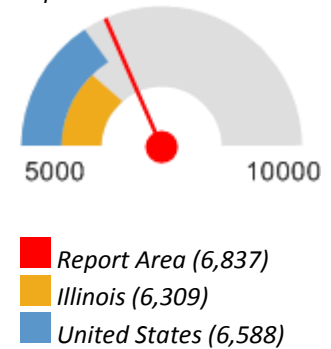
Data Source: Centers for Disease Control and Prevention, National Vital Statistics System. Accessed via CDC WONDER. 2010-14. Source geography: County

Mortality - Premature Death

This indicator reports Years of Potential Life Lost (YPLL) before age 75 per 100,000 population for all causes of death, age-adjusted to the 2000 standard. YPLL measures premature death and is calculated by subtracting the age of death from the 75 year benchmark. This indicator is relevant because a measure of premature death can provide a unique and comprehensive look at overall health status.

Report Area	Total Population, Census 2010	Total Premature Deaths, 2011-2013 Average	Total Years of Potential Life Lost, 2011-2013 Average	Years of Potential Life Lost, Rate per 100,000 Population
Report Area	53,624	216	3,666	6,837
Bureau County, IL	34,978	132	2,372	6,781
Marshall County, IL	12,640	60	951	7,524
Putnam County, IL	6,006	23	343	5,717
Illinois	12,830,632	43,349	809,525	6,309
United States	312,732,537	1,119,700	20,584,925	6,588

Years of Potential Life Lost, Rate per 100,000 Population



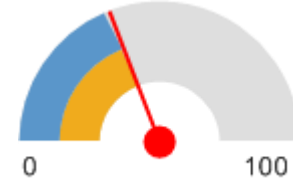
Data Source: University of Wisconsin Population Health Institute, County Health Rankings. Centers for Disease Control and Prevention, National Vital Statistics System. Accessed via CDC WONDER. 2011-13. Source geography: County

Mortality - Stroke

Within the report area there are an estimated 38.5 deaths due to cerebrovascular disease (stroke) per 100,000 population. This is greater than the Healthy People 2020 target of less than or equal to 33.8. Figures are reported as crude rates, and as rates age-adjusted to year 2000 standard. Rates are resummarized for report areas from county level data, only where data is available. This indicator is relevant because stroke is a leading cause of death in the United States.

Report Area	Total Population	Average Annual Deaths, 2010-2014	Crude Death Rate (Per 100,000 Pop.)	Age-Adjusted Death Rate (Per 100,000 Pop.)
Report Area	52,590	32	61.2	38.5
Bureau County, IL	34,362	19	54.71	33
Marshall County, IL	12,333	11	92.43	53.7
Putnam County, IL	5,895	2	33.93	no data
Illinois	12,867,528	5,368	41.72	37.9
United States	313,836,267	129,754	41.34	37.3
<u>HP 2020 Target</u>				<= 33.8

Stroke Mortality, Age-Adjusted Death Rate (Per 100,000 Pop.)



■ Report Area (38.5)
■ Illinois (37.9)
■ United States (37.3)

Data Source: Centers for Disease Control and Prevention, National Vital Statistics System. Accessed via CDC WONDER. 2010-14. Source geography: County

Mortality - Suicide

This indicator reports the rate of death due to intentional self-harm (suicide) per 100,000 population. Figures are reported as crude rates, and as rates age-adjusted to year 2000 standard. Rates are resummarized for report areas from county level data, only where data is available. This indicator is relevant because suicide is an indicator of poor mental health.

Report Area	Total Population	Average Annual Deaths, 2010-2014	Crude Death Rate (Per 100,000 Pop.)	Age-Adjusted Death Rate (Per 100,000 Pop.)
Report Area	52,590	7	15	14
Bureau County, IL	34,362	5	14.55	14
Marshall County, IL	12,333	2	16.22	no data
Putnam County, IL	5,895	0	no data	no data
Illinois	12,867,528	1,283	9.97	9.7
United States	313,836,267	40,466	12.89	12.5
<u>HP 2020 Target</u>				<= 10.2

Suicide, Age-Adjusted Death Rate (Per 100,000 Pop.)



■ Report Area (14)
■ Illinois (9.7)
■ United States (12.5)

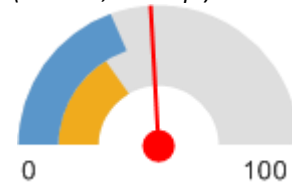
Data Source: Centers for Disease Control and Prevention, National Vital Statistics System. Accessed via CDC WONDER. 2010-14. Source geography: County

Mortality - Unintentional Injury

This indicator reports the rate of death due to unintentional injury (accident) per 100,000 population. Figures are reported as crude rates, and as rates age-adjusted to year 2000 standard. Rates are resummarized for report areas from county level data, only where data is available. This indicator is relevant because accidents are a leading cause of death in the U.S.

Report Area	Total Population	Average Annual Deaths, 2010-2014	Crude Death Rate (Per 100,000 Pop.)	Age-Adjusted Death Rate (Per 100,000 Pop.)
Report Area	52,590	28	52.9	48
Bureau County, IL	34,362	20	57.04	50.1
Marshall County, IL	12,333	6	45.41	42
Putnam County, IL	5,895	3	44.11	no data
Illinois	12,867,528	4,361	33.89	32.7
United States	313,836,267	128,295	40.88	39.2
<u>HP 2020 Target</u>				<= 36.0

Unintentional Injury (Accident) Mortality, Age-Adjusted Death Rate (Per 100,000 Pop.)



■ Report Area (48)
■ Illinois (32.7)
■ United States (39.2)

Data Source: Centers for Disease Control and Prevention, National Vital Statistics System. Accessed via CDC WONDER. 2010-14. Source geography: County

Obesity

28.5% of adults aged 20 and older self-report that they have a Body Mass Index (BMI) greater than 30.0 (obese) in the report area. Excess weight may indicate an unhealthy lifestyle and puts individuals at risk for further health issues.

Report Area	Total Population Age 20	Adults with BMI > 30.0 (Obese)	Percent Adults with BMI > 30.0 (Obese)
Report Area	39,701	11,589	28.5%
Bureau County, IL	25,832	7,517	28.5%
Marshall County, IL	9,351	2,721	28.2%
Putnam County, IL	4,518	1,351	28.8%
Illinois	9,511,847	2,600,939	27%
United States	234,188,203	64,884,915	27.5%

Percent Adults with BMI > 30.0 (Obese)



■ Report Area (28.5%)
■ Illinois (27%)
■ United States (27.5%)

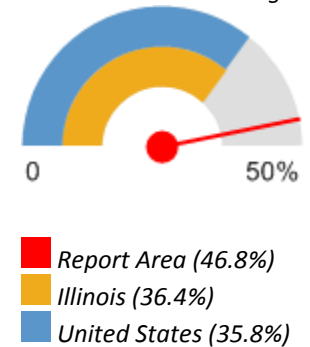
Data Source: Centers for Disease Control and Prevention, National Center for Chronic Disease Prevention and Health Promotion. 2013. Source geography: County

Overweight

46.8% of adults aged 18 and older self-report that they have a Body Mass Index (BMI) between 25.0 and 30.0 (overweight) in the report area. Excess weight may indicate an unhealthy lifestyle and puts individuals at risk for further health issues.

Report Area	Survey Population (Adults Age 18)	Total Adults Overweight	Percent Adults Overweight
Report Area	27,728	12,963	46.8%
Bureau County, IL	27,728	12,963	46.8%
Marshall County, IL	no data	no data	no data
Putnam County, IL	no data	no data	no data
Illinois	9,476,490	3,448,247	36.4%
United States	224,991,207	80,499,532	35.8%

Percent Adults Overweight



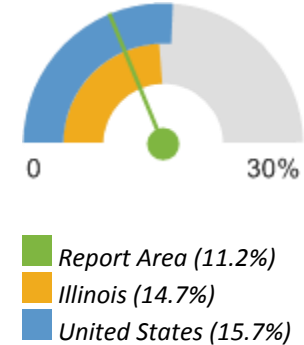
Data Source: Centers for Disease Control and Prevention, Behavioral Risk Factor Surveillance System. Additional data analysis by CARES. 2011-12. Source geography: County

Poor Dental Health

This indicator reports the percentage of adults age 18 and older who self-report that six or more of their permanent teeth have been removed due to tooth decay, gum disease, or infection. This indicator is relevant because it indicates lack of access to dental care and/or social barriers to utilization of dental services.

Report Area	Total Population (Age 18)	Total Adults with Poor Dental Health	Percent Adults with Poor Dental Health
Report Area	41,480	4,633	11.2%
Bureau County, IL	26,898	4,633	17.2%
Marshall County, IL	9,910	0	0%
Putnam County, IL	4,672	0	0%
Illinois	9,654,603	1,418,280	14.7%
United States	235,375,690	36,842,620	15.7%

Percent Adults with Poor Dental Health



Data Source: Centers for Disease Control and Prevention, Behavioral Risk Factor Surveillance System. Additional data analysis by CARES. 2006-10. Source geography: County

Poor General Health

Within the report area 19.6% of adults age 18 and older self-report having poor or fair health in response to the question "Would you say that in general your health is excellent, very good, good, fair, or poor?". This indicator is relevant because it is a measure of general poor health status.

Report Area	Total Population Age 18	Estimated Population with Poor or Fair Health	Crude Percentage	Age-Adjusted Percentage
Report Area	41,438	5,263	19.6%	18.3%
Bureau County, IL	26,853	5,263	19.6%	18.3%
Marshall County, IL	9,914	no data	suppressed	suppressed
Putnam County, IL	4,671	no data	suppressed	suppressed
Illinois	9,654,603	1,486,809	15.4%	15.1%
United States	232,556,016	37,766,703	16.2%	15.7%

Percent Adults with Poor or Fair Health (Age-Adjusted)



■ Report Area (18.3%)
■ Illinois (15.1%)
■ United States (15.7%)

Data Source: Centers for Disease Control and Prevention, Behavioral Risk Factor Surveillance System. Accessed via the Health Indicators Warehouse. US Department of Health Human Services, Health Indicators Warehouse. 2006-12. Source geography: County